

## DESCRIPTION

<b>Species Reactivity</b>	Human
<b>Specificity</b>	Detects human $\beta$ -Catenin in direct ELISAs.
<b>Source</b>	Monoclonal Mouse IgG <sub>3</sub> Clone # 196618
<b>Purification</b>	Protein A or G purified from hybridoma culture supernatant
<b>Immunogen</b>	<i>E. coli</i> -derived recombinant human $\beta$ -Catenin aa 2-781
<b>Formulation</b>	Lyophilized from a 0.2 $\mu$ m filtered solution in PBS with Trehalose. See Certificate of Analysis for details. *Small pack size (-SP) is supplied as a 0.2 $\mu$ m filtered solution in PBS.

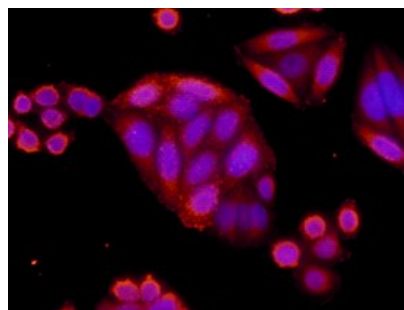
## APPLICATIONS

**Please Note:** Optimal dilutions should be determined by each laboratory for each application. *General Protocols* are available in the *Technical Information* section on our website.

	Recommended Concentration	Sample
<b>Western Blot</b>	1 $\mu$ g/mL	Recombinant Human $\beta$ -Catenin
<b>Immunocytochemistry</b>	8-25 $\mu$ g/mL	See Below
<b>Immunohistochemistry</b>	8-25 $\mu$ g/mL	See Below

## DATA

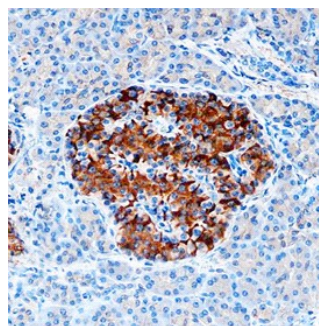
### Immunocytochemistry



#### $\beta$ -Catenin in SW480 Human Cell Line.

$\beta$ -Catenin was detected in immersion fixed SW480 human colorectal adenocarcinoma cell line using 10  $\mu$ g/mL Mouse Anti-Human  $\beta$ -Catenin Monoclonal Antibody (Catalog # MAB13291) for 3 hours at room temperature. Cells were stained with the NorthernLights™ 557-conjugated Anti-Mouse IgG Secondary Antibody (red; Catalog # NL007) and counterstained with DAPI (blue). View our protocol for [Fluorescent ICC Staining of Cells on Coverslips](#).

### Immunohistochemistry



**$\beta$ -Catenin in Human Pancreas.**  $\beta$ -Catenin was detected in immersion fixed paraffin-embedded sections of human pancreas using Mouse Anti-Human  $\beta$ -Catenin Monoclonal Antibody (Catalog # MAB13291) at 1.7  $\mu$ g/mL overnight at 4 °C. Tissue was stained using the Anti-Mouse HRP-DAB Cell & Tissue Staining Kit (brown; Catalog # CTS002) and counterstained with hematoxylin (blue). Specific staining was localized to plasma membranes. View our protocol for [Chromogenic IHC Staining of Paraffin-embedded Tissue Sections](#).

## PREPARATION AND STORAGE

<b>Reconstitution</b>	Reconstitute at 0.5 mg/mL in sterile PBS.
<b>Shipping</b>	The product is shipped at ambient temperature. Upon receipt, store it immediately at the temperature recommended below. *Small pack size (-SP) is shipped with polar packs. Upon receipt, store it immediately at -20 to -70 °C
<b>Stability &amp; Storage</b>	<b>Use a manual defrost freezer and avoid repeated freeze-thaw cycles.</b> <ul style="list-style-type: none"> <li>● 12 months from date of receipt, -20 to -70 °C as supplied.</li> <li>● 1 month, 2 to 8 °C under sterile conditions after reconstitution.</li> <li>● 6 months, -20 to -70 °C under sterile conditions after reconstitution.</li> </ul>

## BACKGROUND

Beta-Catenin is a cadherin-associated protein that is involved in the regulation of cell adhesion. It also acts as a transcriptional co-activator in the nucleus and is also involved in the canonical Wnt signal transduction pathways.