



Monoclonal Anti-mouse PD-L2 Antibody

ORDERING INFORMATION

Catalog Number: MAB1022

Clone: 168633

Lot Number: XFK01

Size: 100 µg

Formulation: 0.2 µm filtered solution in PBS with 5% trehalose

Storage: -20° C

Reconstitution: sterile PBS

Specificity: mouse PD-L2

Immunogen: NS0-derived rmPD-L2 extracellular domain

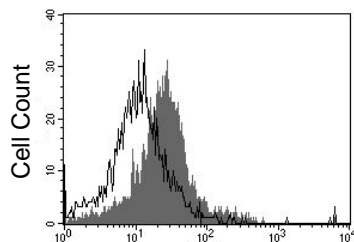
Ig class: rat IgG_{2a}

Recommended Applications:

Western blot
Flow cytometry

Other Application:

Direct ELISA



PD-L2

Raw264.7 cells were stained with anti-PD-L2 (R&D Systems, Cat. # MAB1022, filled histogram) or isotype control antibody (R&D Systems, Cat. # MAB006, open histogram) followed by APC-conjugated anti-rat antibody (R&D Systems, Cat. # F0113).

Preparation

This antibody was produced from a hybridoma resulting from the fusion of a mouse myeloma with B cells obtained from a rat immunized with purified, NS0-derived, recombinant mouse Programmed cell Death 1 Ligand 2 (rmPD-L2) extracellular domain. The IgG fraction of the tissue culture supernatant was purified by Protein G affinity chromatography.

Formulation

Lyophilized from a 0.2 µm filtered solution in phosphate-buffered saline (PBS) with 5% trehalose.

Reconstitution

Reconstitute with sterile PBS. If 0.2 mL of PBS is used, the antibody concentration will be 500 µg/mL.

Storage

Lyophilized samples are stable for twelve months from date of receipt when stored at -20° C to -70° C. Upon reconstitution, the antibody can be stored at 2° - 8° C for 1 month without detectable loss of activity. Reconstituted antibody can also be aliquotted and stored frozen at -20° C to -70° C in a manual defrost freezer for six months without detectable loss of activity. **Avoid repeated freeze-thaw cycles.**

Specificity

This antibody detects mouse PD-L2 in direct ELISAs and Western blots. In these applications, this antibody shows 100% cross-reactivity with rhPD-L2 and no cross-reactivity with rhB7-1, rmB7-1, rmB7-2, rmB7-H1, rmB7-H2, rmB7-H3, or rmB7-H4.

Applications

Western blot - This antibody can be used at 1 - 2 µg/mL with the appropriate secondary reagents to detect mouse PD-L2. Using a colorimetric detection system, the detection limit for rmPD-L2 is approximately 5 ng/lane under non-reducing and reducing conditions. Chemiluminescent detection with WesternGlo™ Chemiluminescent Detection Substrate (R&D Systems, Catalog # AR004) will increase sensitivity by 5 to 50 fold.

Flow cytometry - This antibody was validated for flow cytometry using Raw264.7 cells. Dilute this antibody to 25 µg/mL and add 10 µL of the diluted solution to 1 - 2.5 x 10⁵ cells in a total reaction volume not exceeding 200 µL. The binding of unlabeled antibodies may be visualized by adding a secondary developing reagent such as anti-rat IgG conjugated to a fluorochrome.

Direct ELISA - This antibody can be used at 0.5 - 1.0 µg/mL with the appropriate secondary reagents to detect mouse PD-L2. The detection limit for rmPD-L2 is approximately 2 ng/well.

Optimal dilutions should be determined by each laboratory for each application.

FOR RESEARCH USE ONLY. NOT FOR USE IN HUMANS.

R&D Systems, Inc.
1-800-343-7475

6/1/07