

DESCRIPTION

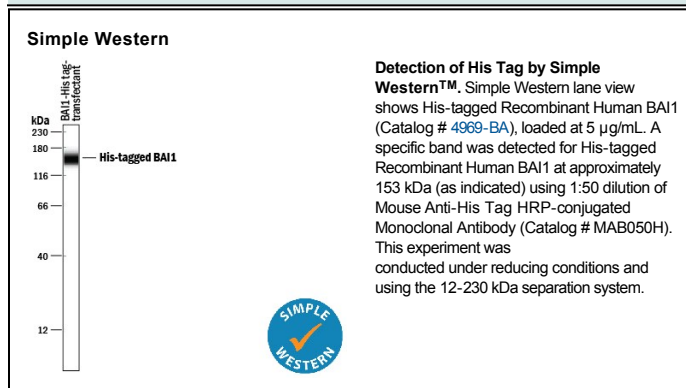
Specificity	Detects proteins containing accessible consecutive histidine regions. The antibody detects His tags at the amino- or carboxyl-terminus.
Source	Monoclonal Mouse IgG ₁ Clone # AD1.1.10
Purification	Protein A or G purified from hybridoma culture supernatant
Immunogen	His-tagged peptide
Formulation	Supplied as a 0.2 µm filtered solution in Sodium Phosphate and Proclin 300. See Certificate of Analysis for details. *Small pack size (-SP) is supplied as a 0.2 µm filtered solution in PBS.

APPLICATIONS

Please Note: Optimal dilutions should be determined by each laboratory for each application. *General Protocols* are available in the *Technical Information* section on our website.

	Recommended Concentration	Sample
Western Blot	1:300-1:5000 dilution	His-tagged proteins
Simple Western	1:50 dilution	See Below

DATA



PREPARATION AND STORAGE

Shipping	The product is shipped at ambient temperature. Upon receipt, store it immediately at the temperature recommended below. *Small pack size (-SP) is shipped with polar packs. Upon receipt, store it immediately at -20 to -70 °C
Stability & Storage	Do not freeze. <ul style="list-style-type: none"> ● 6 months from date of receipt, 2 to 8 °C as supplied. ● 6 months, 2 to 8 °C under sterile conditions after opening.