

DESCRIPTION

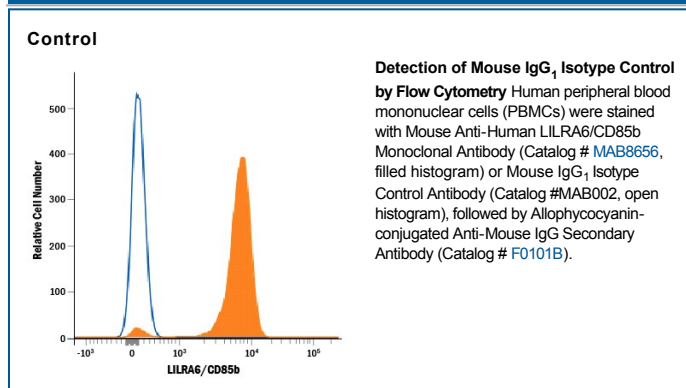
Specificity	Selected for use as mouse IgG ₁ isotype control. In direct ELISAs, does not cross-react with recombinant human (rh) 6Ckine, recombinant mouse (rm) 6Ckine, rhACT-II, rhBLC/BCA-1, rmBLC, rmC10, recombinant rat (rr) CINC-1, rrCINC-2α, rrCINC-2β, rrCINC-3, rhCKβ8-1, recombinant viral (rv) CMV UL146, rmCRG-2, rhENA-78, rhEotaxin, rmEotaxin, rhEotaxin-2, rmEotaxin-2, rhEotaxin-3, rhFractalkine, rmFractalkine, rrFractalkine, rhGCP-2, rmGCP-2, rhGROα, rhGROβ, rhGROγ, rhHCC-1, rhI-309, rhI-Linck, rhIL-8, recombinant porcine IL-8, rhIP-10, rhI-TAC, rmJE, rmKC, rhLeukotactin-1, rhLymphotactin, rmLymphotactin, rmMARC, rhMCP-1, rhMCP-2, rhMCP-3, rhMCP-4, rmMCP-5, rvMCV type 2, rhMDC, rmMDC, rhMIG, rmMIG, rhMIP-1α, mmMIP-1α, rmMIP-1β, rhMIP-1δ, mmMIP-1γ, rmMIP-2, rhMIP-3α, mmMIP-3α, rmMIP-3α, rhMIP-3β, rmMIP-3β, rvMIP-1, rvMIP-II, rvMIP-III, rhMPIF-1, rhNAP-2, rhPARC, rhRANTES, rmRANTES, rhSDF-1α, rmSDF-1α, rhSDF-1β, rhTARC, rmTARC, rmTCA-3, rhTeck, or rmTeck.
Source	Monoclonal Mouse IgG ₁ Clone # 11711
Purification	Protein A or G purified from hybridoma culture supernatant
Immunogen	KLH
Endotoxin Level	<0.10 EU per 1 μg of the antibody by the LAL method.
Formulation	Lyophilized from a 0.2 μm filtered solution in PBS with Trehalose. See Certificate of Analysis for details. *Small pack size (-SP) is supplied as a 0.2 μm filtered solution in PBS.

APPLICATIONS

Please Note: Optimal dilutions should be determined by each laboratory for each application. *General Protocols* are available in the *Technical Information* section on our website.

Negative control for use in conjunction with R&D Systems antibodies. Use at the same concentration as the detection antibody.

DATA



PREPARATION AND STORAGE

Reconstitution	Reconstitute at 0.5 mg/mL in sterile PBS.
Shipping	The product is shipped at ambient temperature. Upon receipt, store it immediately at the temperature recommended below. *Small pack size (-SP) is shipped with polar packs. Upon receipt, store it immediately at -20 to -70 °C
Stability & Storage	Use a manual defrost freezer and avoid repeated freeze-thaw cycles. <ul style="list-style-type: none"> ● 12 months from date of receipt, -20 to -70 °C as supplied. ● 1 month, 2 to 8 °C under sterile conditions after reconstitution. ● 6 months, -20 to -70 °C under sterile conditions after reconstitution.