

DESCRIPTION

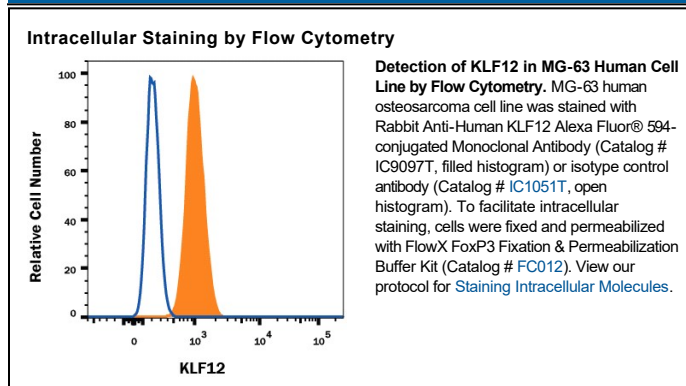
Species Reactivity	Human
Specificity	Detects human KLF12 in direct ELISAs.
Source	Recombinant Monoclonal Rabbit IgG Clone # 1230C
Purification	Protein A or G purified from cell culture supernatant
Immunogen	Mouse myeloma cell line NS0-derived human KLF12 Asn2-Val402 Accession # Q9Y4X4
Conjugate	Alexa Fluor 594 Excitation Wavelength: 590 nm Emission Wavelength: 617 nm
Formulation	Supplied in a saline solution containing BSA and Sodium Azide. See Certificate of Analysis for details. *Contains <0.1% Sodium Azide, which is not hazardous at this concentration according to GHS classifications. Refer to the Safety Data Sheet (SDS) for additional information and handling instructions.

APPLICATIONS

Please Note: Optimal dilutions should be determined by each laboratory for each application. General Protocols are available in the Technical Information section on our website.

	Recommended Concentration	Sample
Intracellular Staining by Flow Cytometry	5 µL/10 ⁶ cells	See Below

DATA



PREPARATION AND STORAGE

Shipping	The product is shipped with polar packs. Upon receipt, store it immediately at the temperature recommended below.
Stability & Storage	Protect from light. Do not freeze. <ul style="list-style-type: none"> ● 12 months from date of receipt, 2 to 8 °C as supplied.

BACKGROUND

KLF12 (Kruppel-like factor 12), also known as AP-2rep and AP-2α, is a 50-55 kDa member of the Sp1 C2H2-type zinc-finger protein family of transcription factors. Its alternate name, AP-2α, should not be confused with the AP-2α factor described by SwissProt # P05549. The molecule's name derives from its structural similarity to fruitfly Kruppel. "Kruppel" being a German word meaning "cripple", a phenotype observed in larva derived from Kruppel knock-out flies. KLF12 is 402 amino acids (aa) in length and characterized by the presence of an N-terminal PVDLS (ProValAspLeuSer) motif coupled to three C2H2-type zinc-finger domains. This classifies it as a KLF3/8/12 subfamily member. KLF is described as being a transcriptional repressor that binds to G-C rich areas of DNA. Cells known to express KLF12 include corneal epithelium, vascular endothelium and renal collecting duct epithelium. Full-length human KLF12 shares 97% aa sequence identity with mouse KLF12.

PRODUCT SPECIFIC NOTICES

This product is provided under an agreement between Life Technologies Corporation and R&D Systems, Inc, and the manufacture, use, sale or import of this product is subject to one or more US patents and corresponding non-US equivalents, owned by Life Technologies Corporation and its affiliates. The purchase of this product conveys to the buyer the non-transferable right to use the purchased amount of the product and components of the product only in research conducted by the buyer (whether the buyer is an academic or for-profit entity). The sale of this product is expressly conditioned on the buyer not using the product or its components (1) in manufacturing; (2) to provide a service, information, or data to an unaffiliated third party for payment; (3) for therapeutic, diagnostic or prophylactic purposes; (4) to resell, sell, or otherwise transfer this product or its components to any third party, or for any other commercial purpose. Life Technologies Corporation will not assert a claim against the buyer of the infringement of the above patents based on the manufacture, use or sale of a commercial product developed in research by the buyer in which this product or its components was employed, provided that neither this product nor any of its components was used in the manufacture of such product. For information on purchasing a license to this product for purposes other than research, contact Life Technologies Corporation, Cell Analysis Business Unit, Business Development, 29851 Willow Creek Road, Eugene, OR 97402, Tel: (541) 465-8300. Fax: (541) 335-0354.