

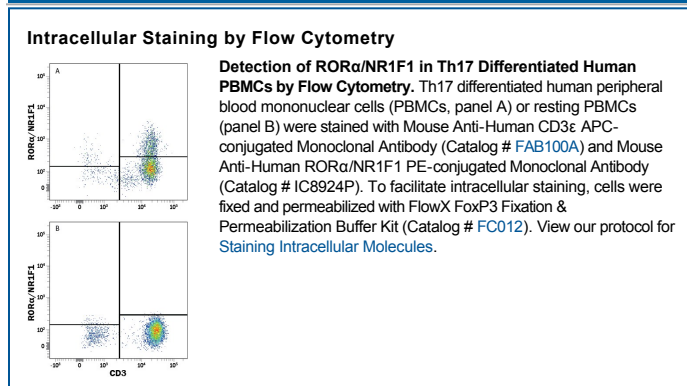
DESCRIPTION	
<b>Species Reactivity</b>	Human
<b>Specificity</b>	Detects human ROR $\alpha$ /NR1F1 in direct ELISAs.
<b>Source</b>	Monoclonal Mouse IgG <sub>2B</sub> Clone # 784652
<b>Purification</b>	Protein A or G purified from hybridoma culture supernatant
<b>Immunogen</b>	<i>E. coli</i> -derived recombinant human ROR $\alpha$ /NR1F1 Arg47-His163 Accession # P35398
<b>Conjugate</b>	Phycoerythrin Excitation Wavelength: 488 nm Emission Wavelength: 565-605 nm
<b>Formulation</b>	Supplied in a saline solution containing BSA and Sodium Azide. See Certificate of Analysis for details.  *Contains <0.1% Sodium Azide, which is not hazardous at this concentration according to GHS classifications. Refer to the Safety Data Sheet (SDS) for additional information and handling instructions.

## APPLICATIONS

**Please Note:** Optimal dilutions should be determined by each laboratory for each application. *General Protocols* are available in the *Technical Information* section on our website.

	Recommended Concentration	Sample
Intracellular Staining by Flow Cytometry	10 $\mu$ L/10 <sup>6</sup> cells	See Below

## DATA



## PREPARATION AND STORAGE

<b>Shipping</b>	The product is shipped with polar packs. Upon receipt, store it immediately at the temperature recommended below.
<b>Stability &amp; Storage</b>	<b>Protect from light. Do not freeze.</b> <ul style="list-style-type: none"> <li>12 months from date of receipt, 2 to 8 °C as supplied.</li> </ul>

## BACKGROUND

ROR $\alpha$  (Retinoid-related Orphan Receptor  $\alpha$ ) is a member of the NR1 nuclear hormone receptor family. ROR $\alpha$  is a DNA binding transcription factor, and can bind as a monomer or homodimer to hormone response elements to enhance expression. Knockout mice implicate ROR $\alpha$  as being essential in the development of the cerebellum. It has also been reported to regulate lymphocyte development and play a role in Th17 differentiation. Human ROR $\alpha$  shares 99% amino sequence identity with mouse ROR $\alpha$ .