

DESCRIPTION

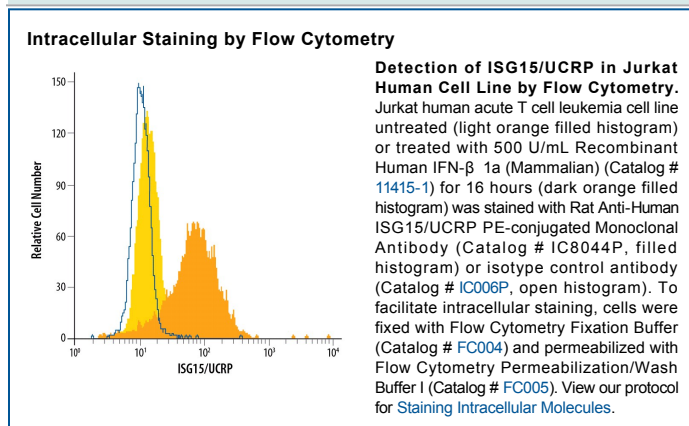
Species Reactivity	Human
Specificity	Detects human ISG15/UCRP in ELISAs and Western Blot.
Source	Monoclonal Rat IgG _{2A} Clone # 851701
Purification	Protein A or G purified from hybridoma culture supernatant
Immunogen	Full-length recombinant human ISG15/UCRP Accession # P05161
Conjugate	Phycoerythrin Excitation Wavelength: 488 nm Emission Wavelength: 565-605 nm
Formulation	Supplied in a saline solution containing BSA and Sodium Azide. See Certificate of Analysis for details. *Contains <0.1% Sodium Azide, which is not hazardous at this concentration according to GHS classifications. Refer to the Safety Data Sheet (SDS) for additional information and handling instructions.

APPLICATIONS

Please Note: Optimal dilutions should be determined by each laboratory for each application. *General Protocols* are available in the *Technical Information* section on our website.

	Recommended Concentration	Sample
Intracellular Staining by Flow Cytometry	10 μ L/10 ⁶ cells	See Below

DATA



PREPARATION AND STORAGE

Shipping	The product is shipped with polar packs. Upon receipt, store it immediately at the temperature recommended below.
Stability & Storage	Protect from light. Do not freeze. <ul style="list-style-type: none"> ● 12 months from date of receipt, 2 to 8 °C as supplied.

BACKGROUND

ISG15 (interferon-induced 15 kDa protein; also known as IP17) is a 15 kDa ubiquitin family protein that is expressed by a wide variety of cell types. ISG15 is induced by type-I IFN, and like ubiquitin, becomes conjugated to intracellular proteins. Unlike ubiquitin, it does not target proteins for degradation. Instead, it is part of the antiviral response. Human proISG15 is 165 amino acids (aa) in length. There are two ubiquitin-like domains (aa 2-78 and 79-157) and a propeptide (aa 158-165) that is cleaved intracellularly. Select blood mononuclear cells secrete mature ISG15, which is chemotactic for neutrophils. Mature human ISG15 is 66% aa identical to mouse ISG15.