

DESCRIPTION

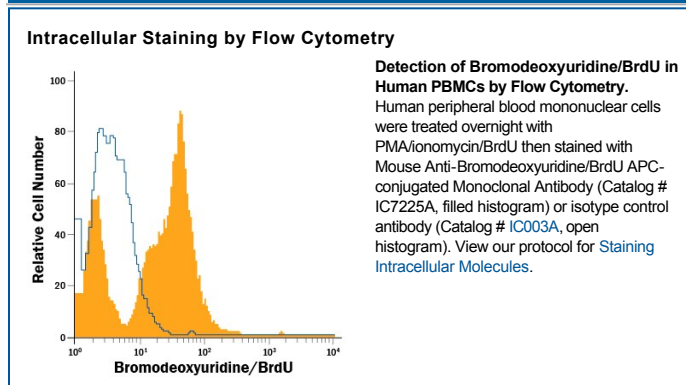
Specificity	Detects Bromodeoxyuridine/BrdU.
Source	Monoclonal Mouse IgG _{2A} Clone # BU-1
Purification	Protein A or G purified from hybridoma culture supernatant
Immunogen	5-iodouridine (5-IO) coupled to ovalbumin
Conjugate	Allophycocyanin Excitation Wavelength: 620-650 nm Emission Wavelength: 660-670 nm
Formulation	Supplied in a saline solution containing BSA and Sodium Azide. See Certificate of Analysis for details. *Contains <0.1% Sodium Azide, which is not hazardous at this concentration according to GHS classifications. Refer to the Safety Data Sheet (SDS) for additional information and handling instructions.

APPLICATIONS

Please Note: Optimal dilutions should be determined by each laboratory for each application. [General Protocols](#) are available in the Technical Information section on our website.

	Recommended Concentration	Sample
Intracellular Staining by Flow Cytometry	10 µL/10 ⁶ cells	See Below

DATA



PREPARATION AND STORAGE

Shipping	The product is shipped with polar packs. Upon receipt, store it immediately at the temperature recommended below.
Stability & Storage	Protect from light. Do not freeze. ● 12 months from date of receipt, 2 to 8 °C as supplied.

BACKGROUND

Bromodeoxyuridine (BrdU) is a nucleoside analog that is incorporated into DNA in place of thymidine. BrdU differs from thymidine by virtue of the fact that BrdU shows a bromine atom substitution for a methyl group in thymidine. The detection of newly synthesized DNA containing BrdU is a commonly used measure of cell proliferation and progression through S phase of the cell cycle.