

DESCRIPTION

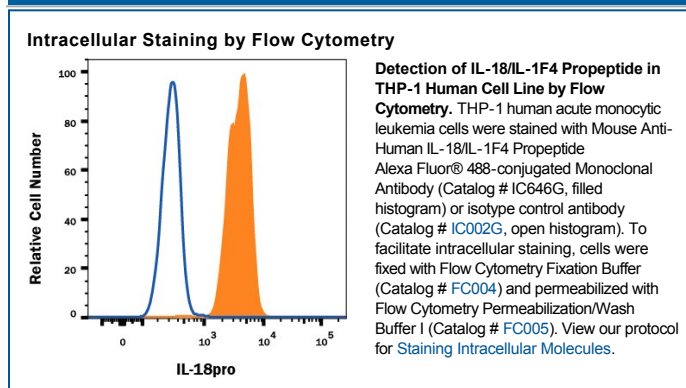
Species Reactivity	Human
Specificity	Detects the pro region of human IL-18/IL-1F4 in direct ELISAs and Western blots. Does not cross-react with recombinant human IL-18, recombinant mouse IL-18 or recombinant rat IL-18.
Source	Monoclonal Mouse IgG ₁ Clone # 74801
Purification	Protein A or G purified from ascites
Immunogen	<i>E. coli</i> -derived recombinant human IL-18/IL-1F4 Accession # Q14116
Conjugate	Alexa Fluor 488 Excitation Wavelength: 488 nm Emission Wavelength: 515-545 nm
Formulation	Supplied in a saline solution containing BSA and Sodium Azide. See Certificate of Analysis for details. *Contains <0.1% Sodium Azide, which is not hazardous at this concentration according to GHS classifications. Refer to the Safety Data Sheet (SDS) for additional information and handling instructions.

APPLICATIONS

Please Note: Optimal dilutions should be determined by each laboratory for each application. [General Protocols](#) are available in the [Technical Information](#) section on our website.

	Recommended Concentration	Sample
Intracellular Staining by Flow Cytometry	5 µL/10 ⁶ cells	See Below

DATA



PREPARATION AND STORAGE

Shipping	The product is shipped with polar packs. Upon receipt, store it immediately at the temperature recommended below.
Stability & Storage	Protect from light. Do not freeze. <ul style="list-style-type: none"> ● 12 months from date of receipt, 2 to 8 °C as supplied.

BACKGROUND

Pro-IL-18 (pro-Interleukin 18; also known as pro-IGIF and pro-IL-1γ) is a 24 kDa member of the IL-1 family of molecules. It is widely expressed, being produced by keratinocytes, intestinal epithelium, T cells, macrophages and osteoblasts. Human Pro-IL-18 is 193 amino acids (aa) in length. Although mature IL-18 induces IFN-γ secretion by NK and T cells, Pro-IL-18 appears to have little intrinsic activity. Generally, active IL-18 is considered to arise from caspase-1 cleavage of Pro-IL-18 between Asp36-Tyr37. This generates an 18 kDa mature C-terminal fragment, and a 4 kDa (predicted) N-terminal prosegment that runs at 6 kDa in SDS-PAGE. Other proteases are known to process Pro-IL-18. Caspase-3 cleavage after Asp68 generates an inactive 14 kDa mature segment, Merpin β-subunit cleavage after Asn52 generates a marginally active 17 kDa mature segment, while parasite Cys protease cleavage after Val47 generates an inactive 17 kDa mature molecule. One splice variant shows a deletion of aa 27-30. Over aa 2-36, human Pro-IL-18 shares 63% aa identity with mouse Pro-IL-18.

Human IL-18/IL-1F4 Propeptide Alexa Fluor® 488-conjugated Antibody

Monoclonal Mouse IgG₁ Clone # 74801

Catalog Number: IC646G

100 Tests

PRODUCT SPECIFIC NOTICES

This product is provided under an agreement between Life Technologies Corporation and R&D Systems, Inc. and the manufacture, use, sale or import of this product is subject to one or more US patents and corresponding non-US equivalents, owned by Life Technologies Corporation and its affiliates. The purchase of this product conveys to the buyer the non-transferable right to use the purchased amount of the product and components of the product only in research conducted by the buyer (whether the buyer is an academic or for-profit entity). The sale of this product is expressly conditioned on the buyer not using the product or its components (1) in manufacturing; (2) to provide a service, information, or data to an unaffiliated third party for payment; (3) for therapeutic, diagnostic or prophylactic purposes; (4) to resell, sell, or otherwise transfer this product or its components to any third party, or for any other commercial purpose. Life Technologies Corporation will not assert a claim against the buyer of the infringement of the above patents based on the manufacture, use or sale of a commercial product developed in research by the buyer in which this product or its components was employed, provided that neither this product nor any of its components was used in the manufacture of such product. For information on purchasing a license to this product for purposes other than research, contact Life Technologies Corporation, Cell Analysis Business Unit, Business Development, 29851 Willow Creek Road, Eugene, OR 97402, Tel: (541) 465-8300. Fax: (541) 335-0354.