

### DESCRIPTION

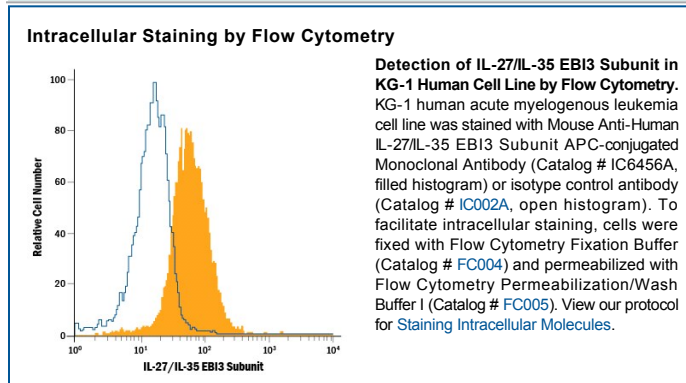
<b>Species Reactivity</b>	Human
<b>Specificity</b>	Detects human IL-27/IL-35 EB13 Subunit in direct ELISAs. In direct ELISAs, no cross-reactivity with recombinant mouse (rm) IL-27 EB13 or rmlL-27 (EB13 + p28 heterodimer) is observed.
<b>Source</b>	Monoclonal Mouse IgG <sub>1</sub> Clone # 607201
<b>Purification</b>	Protein A or G purified from hybridoma culture supernatant
<b>Immunogen</b>	Mouse myeloma cell line NS0-derived recombinant human IL-27/IL-35 EB13 Subunit Arg21-Lys229 (predicted) Accession # Q14213
<b>Conjugate</b>	Allophycocyanin Excitation Wavelength: 620-650 nm Emission Wavelength: 660-670 nm
<b>Formulation</b>	Supplied in a saline solution containing BSA and Sodium Azide. See Certificate of Analysis for details.  *Contains <0.1% Sodium Azide, which is not hazardous at this concentration according to GHS classifications. Refer to the Safety Data Sheet (SDS) for additional information and handling instructions.

### APPLICATIONS

**Please Note:** Optimal dilutions should be determined by each laboratory for each application. *General Protocols* are available in the *Technical Information* section on our website.

	<b>Recommended Concentration</b>	<b>Sample</b>
<b>Intracellular Staining by Flow Cytometry</b>	10 µL/10 <sup>6</sup> cells	See Below

### DATA



### PREPARATION AND STORAGE

**Shipping** The product is shipped with polar packs. Upon receipt, store it immediately at the temperature recommended below.

**Stability & Storage** **Protect from light. Do not freeze.**

- 12 months from date of receipt, 2 to 8 °C as supplied.

### BACKGROUND

IL-27 is a heterodimeric cytokine comprised of the IL-12 p35-related protein, p28, and the IL-12 p40-related protein, EB13 (Epstein-Barr virus-Induced gene 3). IL-27 is expressed by monocytes, endothelial cells and dendritic cells. It binds TCCR/WSX-1 on naive CD4<sup>+</sup> T cells and induces the expression of a functional IL-12 receptor, making these cells sensitive to IL-12-mediated Th1 cell development. Human EB13 also associates with the p35 subunit of IL-12 to form IL-35 which is important for immunosuppressive Treg cell induction. EB13 is 61% amino acid (aa) identical to mouse EB13 and includes an 20 aa signal peptide and a 209 aa mature protein with two fibronectin type III domains.