

DESCRIPTION

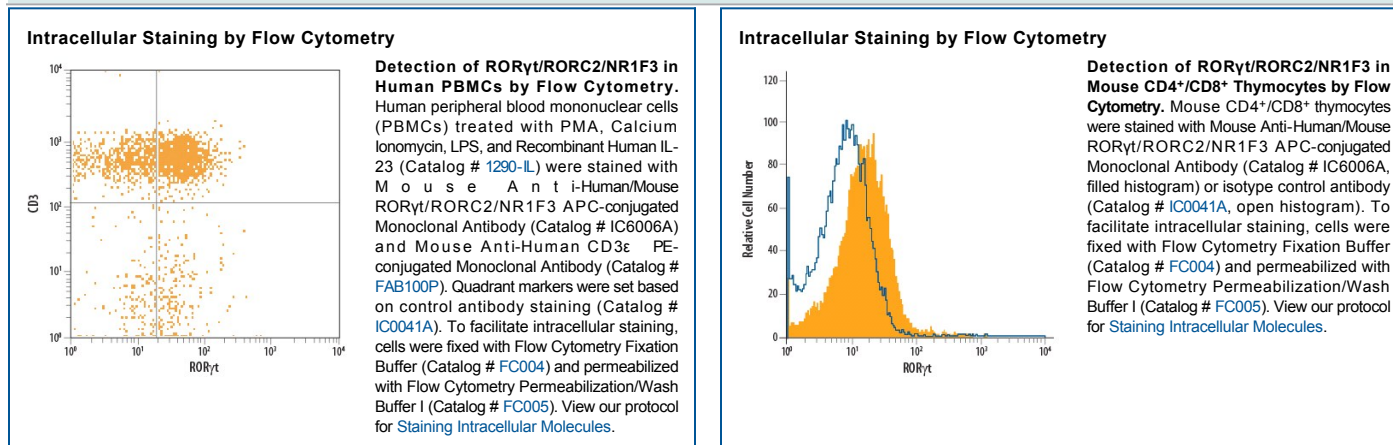
| | |
|---------------------------|------------------------------------------------------------------------------------------------------------------------------------------------------------------------------------------------------------------------------------------------------------------------------------------------------------------------|
| Species Reactivity | Human/Mouse |
| Specificity | Detects human and mouse ROR γ t/RORC2 in direct ELISAs. In direct ELISAs, no cross-reactivity with human and mouse RORC. |
| Source | Monoclonal Mouse IgG _{2B} Clone # 600380 |
| Purification | Protein A or G purified from hybridoma culture supernatant |
| Immunogen | Human ROR γ t peptide Met1-Arg10 Accession # P51449 |
| Conjugate | Allophycocyanin Excitation Wavelength: 620-650 nm Emission Wavelength: 660-670 nm |
| Formulation | Supplied in a saline solution containing BSA and Sodium Azide. See Certificate of Analysis for details. *Contains <0.1% Sodium Azide, which is not hazardous at this concentration according to GHS classifications. Refer to the Safety Data Sheet (SDS) for additional information and handling instructions. |

APPLICATIONS

Please Note: Optimal dilutions should be determined by each laboratory for each application. *General Protocols* are available in the *Technical Information* section on our website.

| | Recommended Concentration | Sample |
|------------------------------------------|----------------------------------|-----------|
| Intracellular Staining by Flow Cytometry | 10 μ L/10 ⁶ cells | See Below |

DATA



PREPARATION AND STORAGE

| | |
|--------------------------------|----------------------------------------------------------------------------------------------------------------------------------------------------|
| Shipping | The product is shipped with polar packs. Upon receipt, store it immediately at the temperature recommended below. |
| Stability & Storage | Protect from light. Do not freeze. <ul style="list-style-type: none"> 12 months from date of receipt, 2 to 8 °C as supplied. |

BACKGROUND

Retinoic acid-related Orphan Receptor gamma (ROR γ , TOR, RORC; NR1F3) is a member of the orphan nuclear receptor family. ROR γ is expressed in the muscle, thymus, testis, pancreas, prostate, heart, and liver. ROR γ plays a role in thymocyte development and homeostasis. RORs bind to DNA as monomers on half-site elements with 5' A/T-rich extensions. An N-terminal isoform of ROR γ , ROR γ t, has been shown to be specifically expressed in the thymus.