

DESCRIPTION

Species Reactivity	Human/Mouse/Rat
Specificity	Conjugated Ribosomal Protein S6/RPS6 antibodies are ideal for immunocytochemistry colocalization studies in ribosomes. The unconjugated antibody detects endogenous human, mouse and rat Ribosomal Protein S6/RPS6 in Western blots.
Source	Monoclonal Mouse IgG _{2B} Clone # 522731
Purification	Protein A or G purified from hybridoma culture supernatant
Immunogen	<i>E. coli</i> -derived recombinant human Ribosomal Protein S6/RPS6 Met1-Lys249 Accession # P62753
Conjugate	Alexa Fluor 488 Excitation Wavelength: 488 nm Emission Wavelength: 515-545 nm
Formulation	Supplied in a saline solution containing BSA and Sodium Azide. See Certificate of Analysis for details. *Contains <0.1% Sodium Azide, which is not hazardous at this concentration according to GHS classifications. Refer to the Safety Data Sheet (SDS) for additional information and handling instructions.

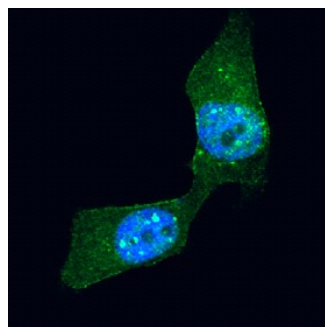
APPLICATIONS

Please Note: Optimal dilutions should be determined by each laboratory for each application. *General Protocols* are available in the *Technical Information* section on our website.

	Recommended Concentration	Sample
Immunocytochemistry	1:10 dilution	See Below

DATA

Immunocytochemistry



Ribosomal Protein S6/RPS6 in HeLa Human Cell Line. Ribosomal Protein S6/RPS6 was detected in formaldehyde fixed HeLa human cervical epithelial carcinoma cell line using Mouse Anti-Human/Mouse/Rat Ribosomal Protein S6/RPS6 Alexa Fluor® 488-conjugated Monoclonal Antibody (Catalog # IC5436G) at 1:10 dilution for 3 hours at room temperature and counterstained with DAPI (blue). Specific staining was localized to ribosomes. View our protocol for [Fluorescent ICC Staining of Cells on Coverslips](#).

PREPARATION AND STORAGE

Shipping The product is shipped with polar packs. Upon receipt, store it immediately at the temperature recommended below.

Stability & Storage **Protect from light. Do not freeze.**

- 12 months from date of receipt, 2 to 8 °C as supplied.

BACKGROUND

40S Ribosomal Protein S6 (RPS6) is the major substrate of protein kinases, particularly p70 S6 kinase, in eukaryotic ribosomes. RPS6 phosphorylation at S235, S236, S240, and S244 upregulates the translation of mRNAs containing an oligopyrimidine tract at their transcriptional start sites. This phosphorylation is stimulated by growth factors, tumor promoting agents, and other mitogens. RPS6 is dephosphorylated during growth arrest.

PRODUCT SPECIFIC NOTICES

This product is provided under an agreement between Life Technologies Corporation and R&D Systems, Inc, and the manufacture, use, sale or import of this product is subject to one or more US patents and corresponding non-US equivalents, owned by Life Technologies Corporation and its affiliates. The purchase of this product conveys to the buyer the non-transferable right to use the purchased amount of the product and components of the product only in research conducted by the buyer (whether the buyer is an academic or for-profit entity). The sale of this product is expressly conditioned on the buyer not using the product or its components (1) in manufacturing; (2) to provide a service, information, or data to an unaffiliated third party for payment; (3) for therapeutic, diagnostic or prophylactic purposes; (4) to resell, sell, or otherwise transfer this product or its components to any third party, or for any other commercial purpose. Life Technologies Corporation will not assert a claim against the buyer of the infringement of the above patents based on the manufacture, use or sale of a commercial product developed in research by the buyer in which this product or its components was employed, provided that neither this product nor any of its components was used in the manufacture of such product. For information on purchasing a license to this product for purposes other than research, contact Life Technologies Corporation, Cell Analysis Business Unit, Business Development, 29851 Willow Creek Road, Eugene, OR 97402, Tel: (541) 465-8300. Fax: (541) 335-0354.