

## DESCRIPTION

<b>Specificity</b>	Detects recombinant GFPuv and eGFP in Western blots.
<b>Source</b>	Monoclonal Mouse IgG <sub>1</sub> Clone # 454505
<b>Purification</b>	Protein A or G purified from hybridoma culture supernatant
<b>Immunogen</b>	<i>E. coli</i> -derived recombinant GFPuv Ser2-Lys238 Accession # P42212
<b>Conjugate</b>	Allophycocyanin Excitation Wavelength: 620-650 nm Emission Wavelength: 660-670 nm
<b>Formulation</b>	Supplied in a saline solution containing BSA and Sodium Azide. See Certificate of Analysis for details.  *Contains <0.1% Sodium Azide, which is not hazardous at this concentration according to GHS classifications. Refer to the Safety Data Sheet (SDS) for additional information and handling instructions.

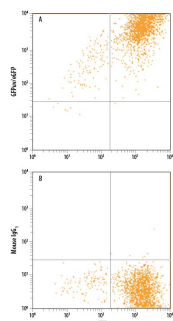
## APPLICATIONS

**Please Note:** Optimal dilutions should be determined by each laboratory for each application. *General Protocols* are available in the *Technical Information* section on our website.

	Recommended Concentration	Sample
Intracellular Staining by Flow Cytometry	10 µL/10 <sup>6</sup> cells	See Below

## DATA

### Intracellular Staining by Flow Cytometry



**Detection of GFPuv/eGFP in HEK293 Human Cell Line Transfected with eGFP by Flow Cytometry.** HEK293 human embryonic kidney cell line transfected with eGFP was stained with either (A) Mouse Anti-GFPuv/eGFP APC-conjugated Monoclonal Antibody (Catalog # IC42401A) or (B) Mouse IgG<sub>1</sub> Allophycocyanin Isotype Control (Catalog # IC002A). To facilitate intracellular staining, cells were fixed with Flow Cytometry Fixation Buffer (Catalog # FC004) and permeabilized with Flow Cytometry Permeabilization/Wash Buffer I (Catalog # FC005). View our protocol for [Staining Intracellular Molecules](#).

## PREPARATION AND STORAGE

**Shipping** The product is shipped with polar packs. Upon receipt, store it immediately at the temperature recommended below.

**Stability & Storage** **Protect from light. Do not freeze.**

- 12 months from date of receipt, 2 to 8 °C as supplied.

## BACKGROUND

Green fluorescent protein (GFP) is a 27 kDa protein originally isolated from the jellyfish *Aequorea victoria*. In the presence of UV light (490-520 nm), it emits a green fluorescent color that can be used to pinpoint locations of various intracellular proteins. GFP is 238 amino acids (aa) in length. It is a globular monomer that has a tendency to dimerize. The monomer has the shape of a β-barrel with a chromophore (aa 65-67) containing α-helix running up its center. GFPuv is the *Aequorea* sequence with three aa substitutions; Phe to Ser at # 99, Met to Thr at # 153, and Val to Ala at # 163. This form expresses faster and is 18-fold brighter than native GFP; excitation peaks at 395 nm and emission at 508 nm.