

DESCRIPTION

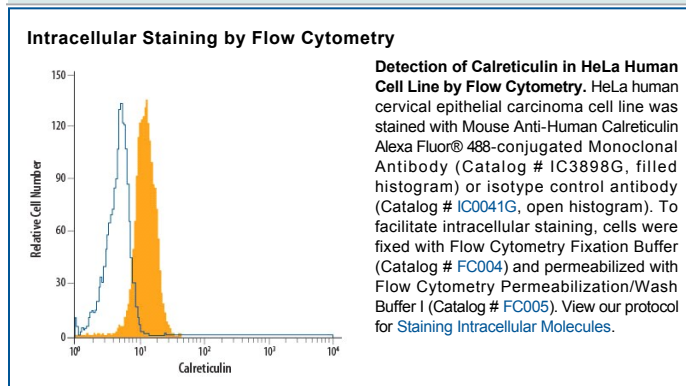
Species Reactivity	Human
Specificity	Detects human Calreticulin in direct ELISAs and Western blots.
Source	Monoclonal Mouse IgG _{2B} Clone # 326203
Purification	Protein A or G purified from hybridoma culture supernatant
Immunogen	<i>E. coli</i> -derived recombinant human Calreticulin Met1-Asn180 Accession # P27797
Conjugate	Alexa Fluor 488 Excitation Wavelength: 488 nm Emission Wavelength: 515-545 nm
Formulation	Supplied in a saline solution containing BSA and Sodium Azide. See Certificate of Analysis for details. *Contains <0.1% Sodium Azide, which is not hazardous at this concentration according to GHS classifications. Refer to the Safety Data Sheet (SDS) for additional information and handling instructions.

APPLICATIONS

Please Note: Optimal dilutions should be determined by each laboratory for each application. *General Protocols* are available in the *Technical Information* section on our website.

	Recommended Concentration	Sample
Intracellular Staining by Flow Cytometry	5 µL/10 ⁶ cells	See Below

DATA



PREPARATION AND STORAGE

Shipping	The product is shipped with polar packs. Upon receipt, store it immediately at the temperature recommended below.
Stability & Storage	Protect from light. Do not freeze. <ul style="list-style-type: none"> 12 months from date of receipt, 2 to 8 °C as supplied.

BACKGROUND

Human Calreticulin is a 55-60 kDa, 400 amino acid, variably glycosylated intra- and extracellular Ca⁺⁺-binding lectin that is ubiquitously expressed. It consists of three domains: a 180 aa N-terminal globular region, a 111 aa P-, or proline rich domain, and a 109 aa C-terminus. The 180 aa N-terminus (aa 18-197) is termed Vasostatin. It is unclear if it is ever generated naturally via proteolytic processing. Vasostatin domain has many functions. It binds to RNA (aa 18-27), has autocatalytic phosphorylase activity (aa 77-197), binds to a KxFFKR motif on steroid hormone receptors, and serves as a lectin-type chaperone for ER-localized molecules. It also shows antiangiogenic activity, presumably by binding to laminin carbohydrates and blocking endothelial cell adhesion and proliferation. Human Calreticulin is 94% aa identical to mouse and rat Calreticulin.

PRODUCT SPECIFIC NOTICES

This product is provided under an agreement between Life Technologies Corporation and R&D Systems, Inc, and the manufacture, use, sale or import of this product is subject to one or more US patents and corresponding non-US equivalents, owned by Life Technologies Corporation and its affiliates. The purchase of this product conveys to the buyer the non-transferable right to use the purchased amount of the product and components of the product only in research conducted by the buyer (whether the buyer is an academic or for-profit entity). The sale of this product is expressly conditioned on the buyer not using the product or its components (1) in manufacturing; (2) to provide a service, information, or data to an unaffiliated third party for payment; (3) for therapeutic, diagnostic or prophylactic purposes; (4) to resell, sell, or otherwise transfer this product or its components to any third party, or for any other commercial purpose. Life Technologies Corporation will not assert a claim against the buyer of the infringement of the above patents based on the manufacture, use or sale of a commercial product developed in research by the buyer in which this product or its components was employed, provided that neither this product nor any of its components was used in the manufacture of such product. For information on purchasing a license to this product for purposes other than research, contact Life Technologies Corporation, Cell Analysis Business Unit, Business Development, 29851 Willow Creek Road, Eugene, OR 97402, Tel: (541) 465-8300. Fax: (541) 335-0354.