

## DESCRIPTION

<b>Species Reactivity</b>	Human/Mouse
<b>Specificity</b>	Detects human and mouse SSEA-1.
<b>Source</b>	Monoclonal Mouse IgM Clone # MC-480
<b>Purification</b>	IgM-specific Affinity-purified from hybridoma culture supernatant
<b>Immunogen</b>	F9 mouse teratocarcinoma stem cells
<b>Conjugate</b>	Alexa Fluor 594 Excitation Wavelength: 590 nm Emission Wavelength: 617 nm
<b>Formulation</b>	Supplied in a saline solution containing BSA and Sodium Azide. See Certificate of Analysis for details.  *Contains <0.1% Sodium Azide, which is not hazardous at this concentration according to GHS classifications. Refer to the Safety Data Sheet (SDS) for additional information and handling instructions.

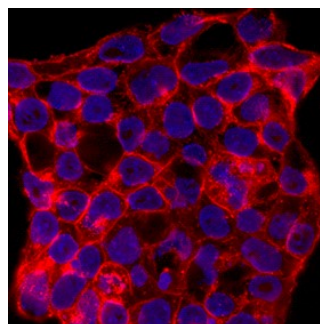
## APPLICATIONS

**Please Note:** Optimal dilutions should be determined by each laboratory for each application. General Protocols are available in the Technical Information section on our website.

	Recommended Concentration	Sample
<b>Immunocytochemistry</b>	5-15 µg/mL	See Below

## DATA

### Immunocytochemistry



**SSEA-1 in D3 Mouse Cell Line.** SSEA-1 was detected in immersion fixed D3 mouse embryonic stem cell line using Mouse Anti-Human/Mouse SSEA-1 Alexa Fluor® 594-conjugated Monoclonal Antibody (Catalog # IC2155T; red) at 10 µg/mL for 3 hours at room temperature. Cells were counterstained with DAPI (blue). Specific staining was localized to cytoplasm and cell surfaces. View our protocol for [Fluorescent ICC Staining of Stem Cells on Coverslips](#).

## PREPARATION AND STORAGE

<b>Shipping</b>	The product is shipped with polar packs. Upon receipt, store it immediately at the temperature recommended below.
<b>Stability &amp; Storage</b>	<b>Protect from light. Do not freeze.</b> <ul style="list-style-type: none"> <li>● 12 months from date of receipt, 2 to 8 °C as supplied.</li> </ul>

## BACKGROUND

Stage-Specific Embryonic Antigen-1 (SSEA-1), an antigenic epitope defined as a Lewis x carbohydrate structure, is expressed during early mouse embryogenesis on murine embryonal carcinoma cells (EC), murine embryonic stem cells (ES), and murine and human germ cells. Expression of SSEA-1 is down-regulated following differentiation of murine EC and ES cells. In contrast, the differentiation of human EC and ES cells is accompanied by an increase in SSEA-1 expression (1, 2).

### References:

1. Solter, D. and Knowles, B.B. (1978) Proc. Natl. Acad. Sci. USA **75**:5565.
2. Fox, N. *et al.* (1983) Cancer Res. **43**:669.

## PRODUCT SPECIFIC NOTICES

This product is provided under an agreement between Life Technologies Corporation and R&D Systems, Inc, and the manufacture, use, sale or import of this product is subject to one or more US patents and corresponding non-US equivalents, owned by Life Technologies Corporation and its affiliates. The purchase of this product conveys to the buyer the non-transferable right to use the purchased amount of the product and components of the product only in research conducted by the buyer (whether the buyer is an academic or for-profit entity). The sale of this product is expressly conditioned on the buyer not using the product or its components (1) in manufacturing; (2) to provide a service, information, or data to an unaffiliated third party for payment; (3) for therapeutic, diagnostic or prophylactic purposes; (4) to resell, sell, or otherwise transfer this product or its components to any third party, or for any other commercial purpose. Life Technologies Corporation will not assert a claim against the buyer of the infringement of the above patents based on the manufacture, use or sale of a commercial product developed in research by the buyer in which this product or its components was employed, provided that neither this product nor any of its components was used in the manufacture of such product. For information on purchasing a license to this product for purposes other than research, contact Life Technologies Corporation, Cell Analysis Business Unit, Business Development, 29851 Willow Creek Road, Eugene, OR 97402, Tel: (541) 465-8300. Fax: (541) 335-0354.