

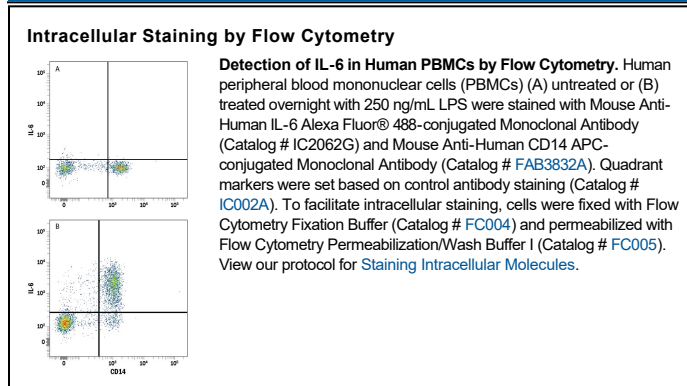
DESCRIPTION	
Species Reactivity	Human
Specificity	Detects human IL-6 in direct ELISAs.
Source	Monoclonal Mouse IgG ₁ Clone # 903129
Purification	Protein A or G purified from ascites
Immunogen	<i>E. coli</i> -derived recombinant human IL-6 Pro29-Met212 Accession # Q75MH2
Conjugate	Alexa Fluor 488 Excitation Wavelength: 488 nm Emission Wavelength: 515-545 nm
Formulation	Supplied in a saline solution containing BSA and Sodium Azide. See Certificate of Analysis for details. *Contains <0.1% Sodium Azide, which is not hazardous at this concentration according to GHS classifications. Refer to the Safety Data Sheet (SDS) for additional information and handling instructions.

APPLICATIONS

Please Note: Optimal dilutions should be determined by each laboratory for each application. *General Protocols* are available in the *Technical Information* section on our website.

	Recommended Concentration	Sample
Intracellular Staining by Flow Cytometry	5 µL/10 ⁶ cells	See Below

DATA



PREPARATION AND STORAGE

Shipping	The product is shipped with polar packs. Upon receipt, store it immediately at the temperature recommended below.
Stability & Storage	Protect from light. Do not freeze. <ul style="list-style-type: none"> 12 months from date of receipt, 2 to 8 °C as supplied.

BACKGROUND

Interleukin 6 (IL-6) is a pleiotropic α -helical cytokine that plays important roles in acute phase reactions, inflammation, hematopoiesis, bone metabolism, and cancer progression. IL-6 activity is essential for the transition from acute inflammation to either acquired immunity or chronic inflammatory disease. It is secreted by multiple cell types as a 22-28 kDa phosphorylated and variably glycosylated molecule (1-4). Mature human IL-6 is 183 amino acids (aa) in length and shares 41% aa sequence identity with mouse and rat IL-6 (5). Alternate splicing generates several isoforms with internal deletions, some of which exhibit antagonistic properties (6-9). Human IL-6 is equally active on mouse and rat cells (10). IL-6 induces signaling through a cell surface heterodimeric receptor complex composed of a ligand binding subunit (IL-6 R) and a signal transducing subunit (gp130). IL-6 binds to IL-6 R, triggering IL-6 R association with gp130 and gp130 dimerization (11). gp130 is also a component of the receptors for CLC, CNTF, CT-1, IL-11, IL-27, LIF, and OSM (12). Soluble forms of IL-6 R are generated by both alternate splicing and proteolytic cleavage (3). In a mechanism known as trans-signaling, complexes of soluble IL-6 and IL-6 R elicit responses from gp130-expressing cells that lack cell surface IL-6 R (3). Trans-signaling enables a wider range of cell types to respond to IL-6, as the expression of gp130 is ubiquitous, while that of IL-6 R is predominantly restricted to hepatocytes, leukocytes, and lymphocytes (3). Soluble splice forms of gp130 block trans-signaling from IL-6/IL-6 R but not from other cytokines that utilize gp130 as a coreceptor (4, 13).

References:

1. Van Snick, J. (1990) *Annu. Rev. Immunol.* **8**:253.
2. Hodge, D.R. *et al.* (2005) *Eur. J. Cancer* **41**:2502.
3. Jones, S.A. (2005) *J. Immunol.* **175**:3468.
4. Rose-John, S. *et al.* (2006) *J. Leukoc. Biol.* **80**:227.
5. Hirano, T. *et al.* (1986) *Nature* **324**:73.
6. Alberti, L. *et al.* (2005) *Cancer Res.* **65**:2.
7. Kestler, D.P. *et al.* (1995) *Blood* **86**:4559.
8. Kestler, D.P. *et al.* (1999) *Am. J. Hematol.* **61**:169.
9. Bihl, M.P. *et al.* (2002) *Am. J. Respir. Cell Mol. Biol.* **27**:48.
10. Chiu, C.P. *et al.* (1988) *Proc. Natl. Acad. Sci. USA* **85**:7099.
11. Murakami, M. *et al.* (1993) *Science* **260**:1808.
12. Muller-Newen, G. (2003) *Sci. STKE* **2003**:PE40.
13. Mitsuyama, K. *et al.* (2006) *Clin. Exp. Immunol.* **143**:125.

PRODUCT SPECIFIC NOTICES

This product is provided under an agreement between Life Technologies Corporation and R&D Systems, Inc, and the manufacture, use, sale or import of this product is subject to one or more US patents and corresponding non-US equivalents, owned by Life Technologies Corporation and its affiliates. The purchase of this product conveys to the buyer the non-transferable right to use the purchased amount of the product and components of the product only in research conducted by the buyer (whether the buyer is an academic or for-profit entity). The sale of this product is expressly conditioned on the buyer not using the product or its components (1) in manufacturing; (2) to provide a service, information, or data to an unaffiliated third party for payment; (3) for therapeutic, diagnostic or prophylactic purposes; (4) to resell, sell, or otherwise transfer this product or its components to any third party, or for any other commercial purpose. Life Technologies Corporation will not assert a claim against the buyer of the infringement of the above patents based on the manufacture, use or sale of a commercial product developed in research by the buyer in which this product or its components was employed, provided that neither this product nor any of its components was used in the manufacture of such product. For information on purchasing a license to this product for purposes other than research, contact Life Technologies Corporation, Cell Analysis Business Unit, Business Development, 29851 Willow Creek Road, Eugene, OR 97402, Tel: (541) 465-8300. Fax: (541) 335-0354.