

DESCRIPTION

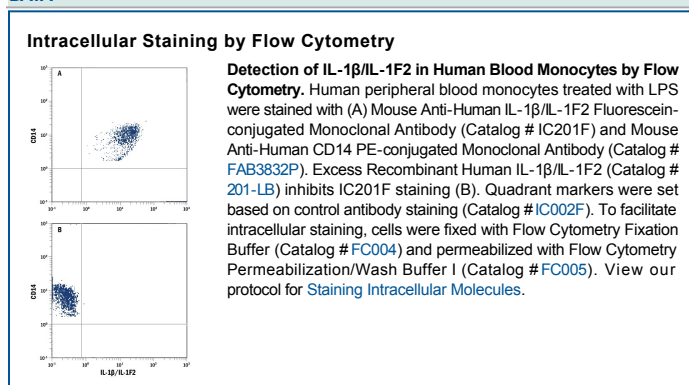
Species Reactivity	Human
Specificity	Detects human IL-1 β /IL-1F2 in Western blots. Shows less than 5% cross-reactivity with recombinant mouse (rm) IL-1 β /IL-1F2 and recombinant porcine IL-1 β /IL-1F2 and no cross-reactivity with recombinant rat (rr) IL-1 β /IL-1F2, rmIL-1 α , recombinant human IL-1ra, rmIL-1ra, or rIL-1 α .
Source	Monoclonal Mouse IgG ₁ Clone # 8516
Purification	Protein A or G purified from hybridoma culture supernatant
Immunogen	<i>E. coli</i> -derived recombinant human IL-1 β /IL-1F2 Ala117-Ser269 Accession # P01584
Conjugate	Fluorescein Excitation Wavelength: 488 nm Emission Wavelength: 515-545 nm
Formulation	Supplied in a saline solution containing BSA and Sodium Azide. See Certificate of Analysis for details. *Contains <0.1% Sodium Azide, which is not hazardous at this concentration according to GHS classifications. Refer to the Safety Data Sheet (SDS) for additional information and handling instructions.

APPLICATIONS

Please Note: Optimal dilutions should be determined by each laboratory for each application. *General Protocols* are available in the *Technical Information* section on our website.

	Recommended Concentration	Sample
Intracellular Staining by Flow Cytometry	10 μ L/10 ⁶ cells	See Below

DATA



PREPARATION AND STORAGE

Shipping The product is shipped with polar packs. Upon receipt, store it immediately at the temperature recommended below.

Stability & Storage **Protect from light. Do not freeze.**

- 12 months from date of receipt, 2 to 8 °C as supplied.

BACKGROUND

IL-1 is a name that designates two pleiotropic cytokines, IL-1 α (IL-1F1) and IL-1 β (IL-1F2), which are the products of distinct genes. IL-1 α and IL-1 β are structurally related polypeptides that share approximately 21% amino acid (aa) identity in human. Both proteins are produced by a wide variety of cells in response to inflammatory agents, infections, or microbial endotoxins. While IL-1 α and IL-1 β are regulated independently, they bind to the same receptor and exert identical biological effects. IL-1 RI binds directly to IL-1 α or IL-1 β and then associates with IL-1 R Accessory Protein (IL-1 R3/IL-1 R ACP) to form a high-affinity receptor complex that is competent for signal transduction. IL-1 RII has high affinity for IL-1 β but functions as a decoy receptor and negative regulator of IL-1 β activity. IL-1ra functions as a competitive antagonist by preventing IL-1 α and IL-1 β from interacting with IL-1 RI (1 - 4). The human IL-1 β cDNA encodes a 269 aa precursor. A 116 aa propeptide is cleaved intracellularly by the cysteine protease IL-1 β -converting enzyme (Caspase-1/ICE) to generate the active cytokine (5-7). The 17 kDa mature human IL-1 β shares 96% aa sequence identity with rhesus and 67-78% with canine, cotton rat, equine, feline, mouse, porcine, and rat IL-1 β .

References:

1. Allan, S.M. *et al.* (2005) *Nat. Rev. Immunol.* **5**:629.
2. Boraschi, D. and A. Tagliabue (2006) *Vitam. Horm.* **74**:229.
3. Kornman, K.S. (2006) *Am. J. Clin. Nutr.* **83**:475S.
4. Isoda, K. and F. Ohsuzu (2006) *J. Atheroscler. Thromb.* **13**:21.
5. March, C.J. *et al.* (1985) *Nature* **315**:641.
6. Auron, P.E. *et al.* (1984) *Proc. Natl. Acad. Sci. USA* **81**:7907.
7. Martinon, F. and J. Tschopp (2007) *Cell Death Differ.* **14**:10.