

DESCRIPTION

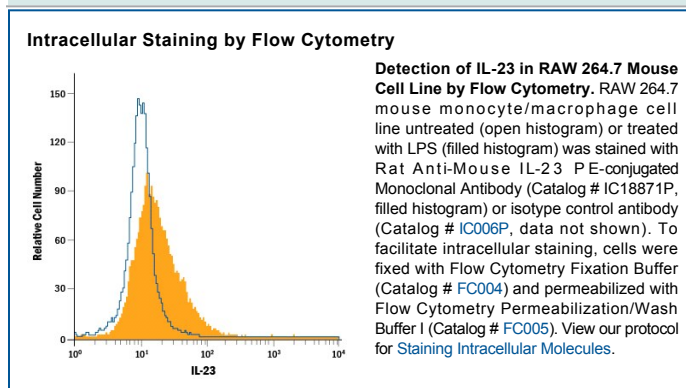
Species Reactivity	Mouse
Specificity	Detects mouse IL-23 in flow cytometry.
Source	Monoclonal Rat IgG _{2A} Clone # 320244
Purification	Protein A or G purified from hybridoma culture supernatant
Immunogen	<i>E. coli</i> -derived recombinant mouse IL-23 p19 and recombinant mouse IL-12/IL-23 p40 Leu20-Ala196 (IL-23 p19) & Met23-Ser335 (IL-12/IL-23 p40) Accession # Q9EQ14 (IL-23 p19) & P43432 (IL-12/IL-23 p40)
Conjugate	Phycoerythrin Excitation Wavelength: 488 nm Emission Wavelength: 565-605 nm
Formulation	Supplied in a saline solution containing BSA and Sodium Azide. See Certificate of Analysis for details. *Contains <0.1% Sodium Azide, which is not hazardous at this concentration according to GHS classifications. Refer to the Safety Data Sheet (SDS) for additional information and handling instructions.

APPLICATIONS

Please Note: Optimal dilutions should be determined by each laboratory for each application. *General Protocols* are available in the *Technical Information* section on our website.

	Recommended Concentration	Sample
Intracellular Staining by Flow Cytometry	10 µL/10 ⁶ cells	See Below

DATA



PREPARATION AND STORAGE

Shipping	The product is shipped with polar packs. Upon receipt, store it immediately at the temperature recommended below.
Stability & Storage	Protect from light. Do not freeze. <ul style="list-style-type: none"> ● 12 months from date of receipt, 2 to 8 °C as supplied.

BACKGROUND

Interleukin 23 (IL-23) is a heterodimeric cytokine composed of two disulfide-linked subunits, a p19 subunit that is unique to IL-23, and a p40 subunit that is shared with IL-12 (1-5). The p19 subunit has homology to the p35 subunit of IL-12, as well as to other single chain cytokines such as IL-6 and IL-11. The p40 subunit is homologous to the extracellular domains of the hematopoietic cytokine receptors. Mouse p19 cDNA encodes a 196 amino acid residue (aa) precursor protein with a putative 19 aa signal peptide and 177 aa mature protein. Human and mouse p19 share 70% aa sequence identity. Although p19 is expressed by activated macrophages, dendritic cells, T cells, and endothelial cells, only activated macrophages and dendritic cells express p40 concurrently to produce IL-23. The functional IL-23 receptor complex consists of two receptor subunits, the IL-12 receptor beta 1 subunit (IL-12 Rβ1) and the IL-23-specific receptor subunit (IL-23 R). IL-23 has biological activities that are similar to, but distinct from IL-12. Both IL-12 and IL-23 induce proliferation and IFN-γ production by human T cells. While IL-12 acts on both naive and memory human T cells, the effects of IL-23 is restricted to memory T cells. In mouse, IL-23 but not IL-12, has also been shown to induce memory T cells to secrete IL-17, a potent pro-inflammatory cytokine. IL-12 and IL-23 can induce IL-12 production from mouse splenic DC of both the CD8⁻ and CD8⁺ subtypes, however only IL-23 can act directly on CD8⁺ DC to mediate immunogenic presentation of poorly immunogenic tumor/self peptide.

References:

1. Oppmann, B. *et al.* (2000) *Immunity* **13**:715.
2. Lankford, C.S. and D.M. Frucht (2003) *J. Leukoc. Biol.* **73**:49.
3. Parham, C. *et al.* (2002) *J. Immunol.* **168**:5699.
4. Belladonna, M.L. *et al.* (2002) *J. Immunol.* **168**:5448.
5. Aggarwal, S. *et al.* (2003) *J. Biol. Chem.* **278**:1910.