

## DESCRIPTION

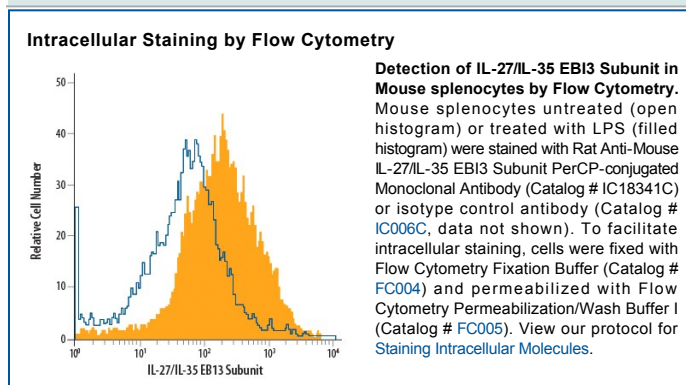
<b>Species Reactivity</b>	Mouse
<b>Specificity</b>	Detects mouse IL-27/IL-35 EBI3 Subunit in direct ELISAs and Western blots. In direct ELISAs and Western blots, this antibody does not cross-react with recombinant human IL-27/IL-35 EBI3 subunit.
<b>Source</b>	Monoclonal Rat IgG <sub>2A</sub> Clone # 355022
<b>Purification</b>	Protein A or G purified from hybridoma culture supernatant
<b>Immunogen</b>	Mouse myeloma cell line NS0-derived recombinant mouse IL-27 heterodimer Tyr19-Pro228 (EBI3) & Phe29-Ser234 (p28) Accession # O35228 (EBI3) & Q8K316 (p28)
<b>Conjugate</b>	PerCP (Peridinin-chlorophyll Protein Complex) Excitation Wavelength: 482 and 564 nm Emission Wavelength: 675 nm
<b>Formulation</b>	Supplied in a saline solution containing BSA and Sodium Azide. See Certificate of Analysis for details.  *Contains <0.1% Sodium Azide, which is not hazardous at this concentration according to GHS classifications. Refer to the Safety Data Sheet (SDS) for additional information and handling instructions.

## APPLICATIONS

**Please Note:** Optimal dilutions should be determined by each laboratory for each application. *General Protocols* are available in the *Technical Information* section on our website.

	Recommended Concentration	Sample
Intracellular Staining by Flow Cytometry	10 µL/10 <sup>6</sup> cells	See Below

## DATA



## PREPARATION AND STORAGE

<b>Shipping</b>	The product is shipped with polar packs. Upon receipt, store it immediately at the temperature recommended below.
<b>Stability &amp; Storage</b>	<b>Protect from light. Do not freeze.</b> <ul style="list-style-type: none"> <li>12 months from date of receipt, 2 to 8 °C as supplied.</li> </ul>

## BACKGROUND

IL-27 is a heterodimeric cytokine comprised of the IL-12 p35-related protein, p28, and the IL-12 p40-related protein, EBI3 (Epstein-Barr virus-induced gene 3). IL-27 is expressed by monocytes, endothelial cells and dendritic cells. It binds TCCR/WSX-1 on naive CD4<sup>+</sup> T cells and induces the expression of a functional IL-12 receptor, making these cells sensitive to IL-12-mediated Th1 cell development. Human EBI3 also associates with the p35 subunit of IL-12 to form IL-35 which is important for immunosuppressive Treg cell induction. EBI3 is 61% amino acid (aa) identical to mouse EBI3 and includes an 20 aa signal peptide and a 209 aa mature protein with two fibronectin type III domains.