

DESCRIPTION

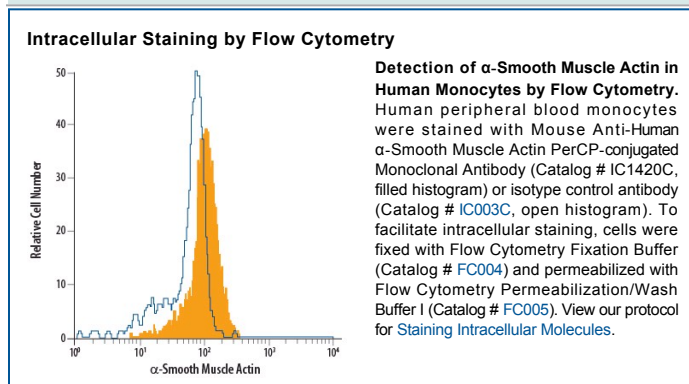
Species Reactivity	Human
Specificity	Detects human α -Smooth Muscle Actin.
Source	Monoclonal Mouse IgG _{2A} Clone # 1A4
Purification	Protein A or G purified from hybridoma culture supernatant
Immunogen	α -Smooth Muscle Actin N-terminal Synthetic Decapeptide
Conjugate	PerCP (Peridinin-chlorophyll Protein Complex) Excitation Wavelength: 482 and 564 nm Emission Wavelength: 675 nm
Formulation	Supplied in a saline solution containing BSA and Sodium Azide. See Certificate of Analysis for details. *Contains <0.1% Sodium Azide, which is not hazardous at this concentration according to GHS classifications. Refer to the Safety Data Sheet (SDS) for additional information and handling instructions.

APPLICATIONS

Please Note: Optimal dilutions should be determined by each laboratory for each application. *General Protocols* are available in the Technical Information section on our website.

	Recommended Concentration	Sample
Intracellular Staining by Flow Cytometry	10 μ L/10 ⁶ cells	See Below

DATA



PREPARATION AND STORAGE

Shipping The product is shipped with polar packs. Upon receipt, store it immediately at the temperature recommended below.

Stability & Storage **Protect from light. Do not freeze.**

- 12 months from date of receipt, 2 to 8 °C as supplied.

BACKGROUND

α -Smooth Muscle Actin has been frequently used as a marker of smooth muscle differentiation (1, 2).

References:

1. Skalli, O. *et al.* (1986) J. Cell Biol. **103**:2787.
2. Oishi, K. *et al.* (2002) J. Physiol. **540**:139.