

## DESCRIPTION

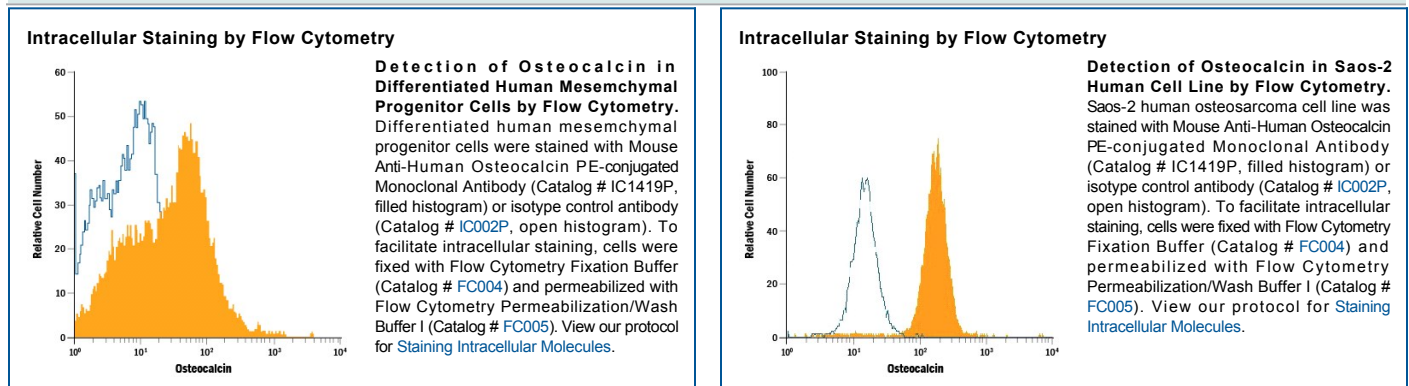
<b>Species Reactivity</b>	Human
<b>Specificity</b>	Detects human Osteocalcin in direct ELISAs.
<b>Source</b>	Monoclonal Mouse IgG <sub>1</sub> Clone # 190125
<b>Purification</b>	Protein A or G purified from hybridoma culture supernatant
<b>Immunogen</b>	Human Osteocalcin synthetic peptide YLYQWLGAIPVYPDPLEPRREVCELNPDCELDHIGFQEAYRRFYGPV Accession # P02818
<b>Conjugate</b>	Phycoerythrin Excitation Wavelength: 488 nm Emission Wavelength: 565-605 nm
<b>Formulation</b>	Supplied in a saline solution containing BSA and Sodium Azide. See Certificate of Analysis for details.  *Contains <0.1% Sodium Azide, which is not hazardous at this concentration according to GHS classifications. Refer to the Safety Data Sheet (SDS) for additional information and handling instructions.

## APPLICATIONS

**Please Note:** Optimal dilutions should be determined by each laboratory for each application. *General Protocols* are available in the *Technical Information* section on our website.

	Recommended Concentration	Sample
Intracellular Staining by Flow Cytometry	10 $\mu$ L/10 <sup>6</sup> cells	See Below

## DATA



## PREPARATION AND STORAGE

<b>Shipping</b>	The product is shipped with polar packs. Upon receipt, store it immediately at the temperature recommended below.
<b>Stability &amp; Storage</b>	<b>Protect from light. Do not freeze.</b> <ul style="list-style-type: none"> <li>12 months from date of receipt, 2 to 8 °C as supplied.</li> </ul>

## BACKGROUND

Osteocalcin, also known as Bone  $\gamma$ -Carboxyglutamic Acid Protein, is a secreted protein whose expression is restricted to cells of the osteoblast lineage (1). It has been frequently used as a marker for osteoblast lineage cells.

### References:

- Lian, J.B. *et al.* (1999) *Vitamin. Horm.* **55**:443.