

#### DESCRIPTION

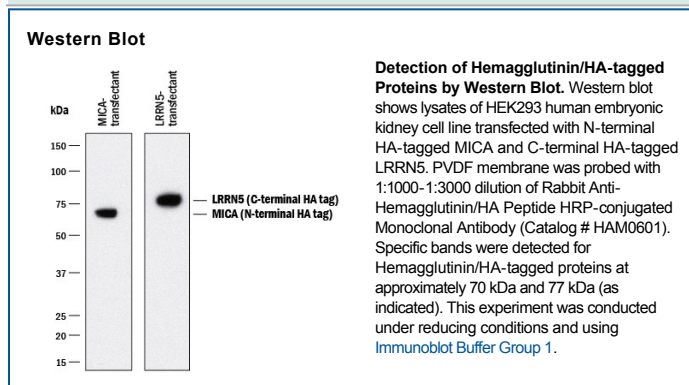
<b>Specificity</b>	Detects N-terminal and C-terminal Hemagglutinin/HA-tagged proteins in Western blot.
<b>Source</b>	Monoclonal Rabbit IgG Clone # 1049F
<b>Purification</b>	Protein A or G purified from hybridoma culture supernatant
<b>Immunogen</b>	Hemagglutinin/HA peptide Accession # ABB51961
<b>Formulation</b>	Supplied as a solution in PBS containing BSA, Glycerol and Sodium Azide. See Certificate of Analysis for details.

#### APPLICATIONS

**Please Note:** Optimal dilutions should be determined by each laboratory for each application. *General Protocols* are available in the *Technical Information* section on our website.

	<b>Recommended Concentration</b>	<b>Sample</b>
<b>Western Blot</b>	1:1000-1:3000 dilution	See Below

#### DATA



#### PREPARATION AND STORAGE

<b>Shipping</b>	The product is shipped with polar packs. Upon receipt, store it immediately at the temperature recommended below.
<b>Stability &amp; Storage</b>	<p><b>Use a manual defrost freezer and avoid repeated freeze-thaw cycles.</b></p> <ul style="list-style-type: none"> <li>● 12 months from date of receipt, -20 °C, as supplied.</li> <li>● 1 month, 2 to 8 °C under sterile conditions after opening.</li> <li>● 6 months, -20 to -70 °C under sterile conditions after opening.</li> </ul>

#### PRODUCT SPECIFIC NOTICES

\* Contains <0.1% Sodium Azide, which is not hazardous at this concentration according to GHS classifications. Refer to SDS for additional information and handling instructions.