

DESCRIPTION

Species Reactivity	Goat
Specificity	Detects goat IgG heavy and light chains in direct ELISAs and Western blots. In direct ELISAs, approximately 5% cross-reactivity with human IgG, rabbit IgG, mouse IgG and less than 1% cross-reactivity with chicken IgY is observed.
Source	Polyclonal Donkey IgG
Purification	Antigen Affinity-purified
Immunogen	Goat IgG
Formulation	Supplied as a 0.2 um filtered solution in PBS with stabilizers. See Certificate of Analysis for details.

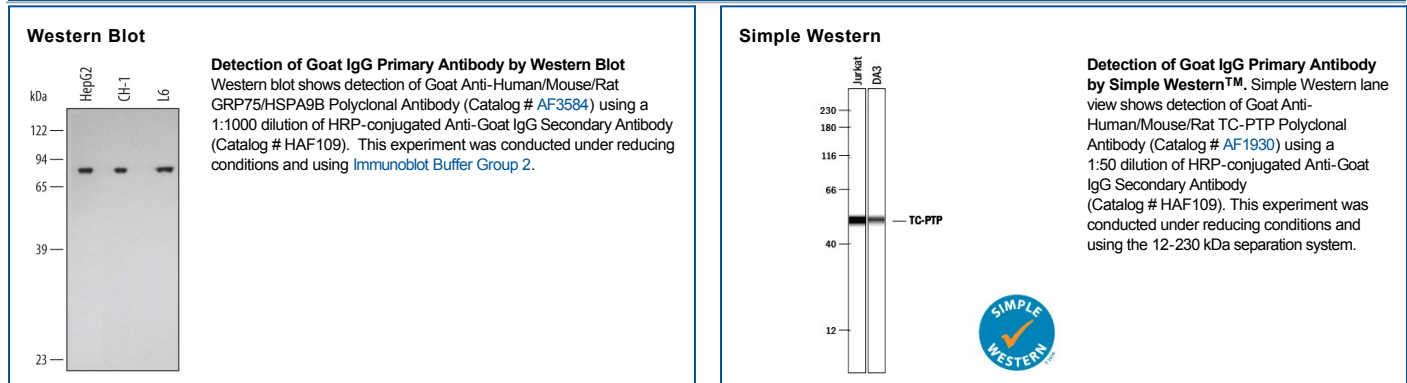
APPLICATIONS

Please Note: Optimal dilutions should be determined by each laboratory for each application. *General Protocols* are available in the *Technical Information* section on our website.

Western Blot Use at a 1:1000 dilution.

Simple Western Use at a 1:50 dilution.

DATA



PREPARATION AND STORAGE

Shipping The product is shipped with polar packs. Upon receipt, store it immediately at the temperature recommended below.

Stability & Storage **Do not freeze.**

- 6 months from date of receipt, 2 to 8 °C as supplied.