

DESCRIPTION

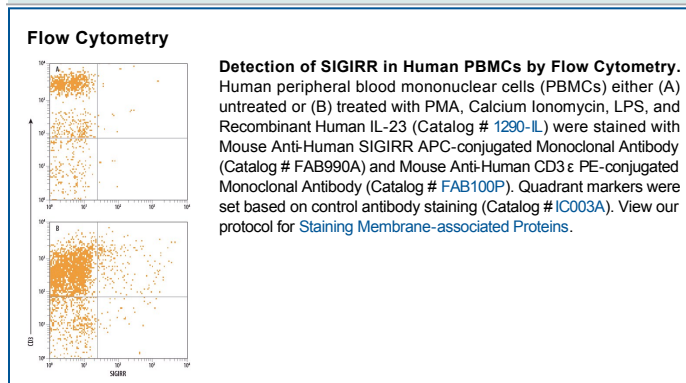
Species Reactivity	Human
Specificity	Detects human SIGIRR in direct ELISAs and Western blots. Does not cross-react with recombinant human (rh) IL-1 RI, rhIL-1 R3, rhIL-1 R8, rhIL-1 RII, rhIL-1 R6, rhIL-1 R4, rhIL-18, rhIL-1 R7, rhIL-9 R9, or recombinant mouse SIGIRR.
Source	Monoclonal Mouse IgG _{2A} Clone # 162201
Purification	Protein A or G purified from hybridoma culture supernatant
Immunogen	Mouse myeloma cell line NS0-derived recombinant human SIGIRR Met1-His118 Accession # Q6IA17
Conjugate	Allophycocyanin Excitation Wavelength: 620-650 nm Emission Wavelength: 660-670 nm
Formulation	Supplied in a saline solution containing BSA and Sodium Azide. See Certificate of Analysis for details. *Contains <0.1% Sodium Azide, which is not hazardous at this concentration according to GHS classifications. Refer to the Safety Data Sheet (SDS) for additional information and handling instructions.

APPLICATIONS

Please Note: Optimal dilutions should be determined by each laboratory for each application. *General Protocols* are available in the *Technical Information* section on our website.

	Recommended Concentration	Sample
Flow Cytometry	10 µL/10 ⁶ cells	See Below

DATA



PREPARATION AND STORAGE

Shipping	The product is shipped with polar packs. Upon receipt, store it immediately at the temperature recommended below.
Stability & Storage	Protect from light. Do not freeze. <ul style="list-style-type: none"> 12 months from date of receipt, 2 to 8 °C as supplied.

BACKGROUND

The Interleukin 1 receptor family (IL-1 R) comprises at least eleven members including IL-1 RI (IL-1 R1), IL-1 RII (IL-1 R2), IL-1 RAcP (IL-1 R3), ST2 (T1/IL-1 R4), IL-18 Rα (IL-1 Rrp/IL-1 R5), IL-1 Rrp2 (IL-1 RL2/IL-1 R6), IL-18 Rβ (AcPL/IL-1 R7), IL-1RAPL-1 (TIGIRR-2/IL-1 R8), and TIGIRR-1 (IL-1 R9) (1). All family members possess three immunoglobulin (Ig)-like domains in their extracellular region. Most members have an intracellular TIR (Toll-like receptor/IL-1 receptor signaling) domain that is also conserved in the Toll-like receptor family. Five of the IL-1 R family members (1, 2, 4, 5, and 6) are clustered and localized to chromosome 2. SIGIRR (single Ig domain containing IL-1 receptor-related molecule) is a subtype of the IL-1 R family that differs from the other nine members by having only one Ig domain in its extracellular region. The sequence of human SIGIRR predicts a 410 amino acid (aa) residue transmembrane glycoprotein that lacks signal peptide and contains a 118 aa single Ig extracellular domain, a transmembrane region and a 268 aa cytoplasmic tail with a TIR domain. The cytoplasmic tail of SIGIRR contains a C-terminal extension beyond the TIR domain which is also found in IL-1 R8, IL-1 R9, and Toll-like receptor family members but absent in other IL-1 receptor family members. SIGIRR is widely expressed and is present in all cells and tissues examined. Mouse and human SIGIRR share 82% amino acid sequence identity. The ligand and signaling mechanism for SIGIRR has not been identified.

References:

1. Thomassen, E. *et al.* (1999) *Cytokine* 11:389.