

DESCRIPTION

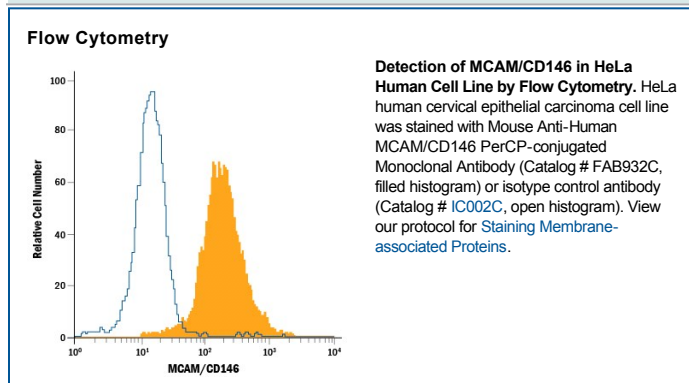
Species Reactivity	Human
Specificity	Detects human MCAM/CD146 in direct ELISAs and Western blots. In direct ELISAs and Western blots, this antibody does not cross-react with recombinant human (rh) ALCAM, rhBCAM, rhEpCAM, rhNCAM-L1, recombinant mouse (rm) OCAM, or rmMAdCAM-1.
Source	Monoclonal Mouse IgG ₁ Clone # 128018
Purification	Protein A or G purified from hybridoma culture supernatant
Immunogen	Mouse myeloma cell line NS0-derived recombinant human MCAM/CD146 Val24-Gly559 Accession # AAA20824
Conjugate	PerCP (Peridinin-chlorophyll Protein Complex) Excitation Wavelength: 482 and 564 nm Emission Wavelength: 675 nm
Formulation	Supplied in a saline solution containing BSA and Sodium Azide. See Certificate of Analysis for details. *Contains <0.1% Sodium Azide, which is not hazardous at this concentration according to GHS classifications. Refer to the Safety Data Sheet (SDS) for additional information and handling instructions.

APPLICATIONS

Please Note: Optimal dilutions should be determined by each laboratory for each application. [General Protocols](#) are available in the Technical Information section on our website.

	Recommended Concentration	Sample
Flow Cytometry	10 µL/10 ⁶ cells	See Below

DATA



PREPARATION AND STORAGE

Shipping	The product is shipped with polar packs. Upon receipt, store it immediately at the temperature recommended below.
Stability & Storage	Protect from light. Do not freeze. ● 12 months from date of receipt, 2 to 8 °C as supplied.

BACKGROUND

MCAM, also known as MUC18 and CD146, is a putative adhesion molecule that belongs to the immunoglobulin superfamily. It is associated with tumor progression and metastasis of various carcinomas and may be involved in embryonic neural development.