

DESCRIPTION

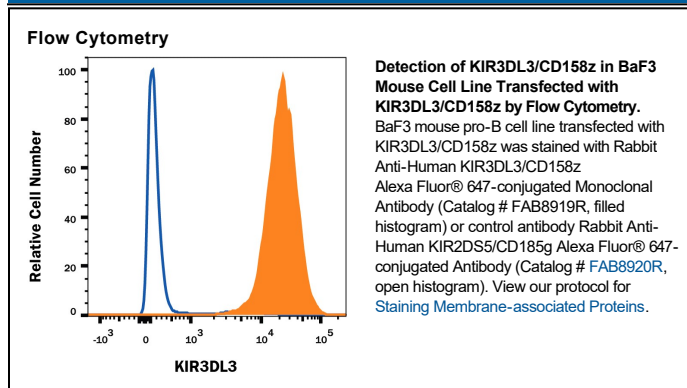
Species Reactivity	Human
Specificity	Detects human KIR3DL3/CD158z in direct ELISAs.
Source	Recombinant Monoclonal Rabbit IgG Clone # 1136B
Purification	Protein A or G purified from cell culture supernatant
Immunogen	Human embryonic kidney cell line HEK293-derived recombinant human KIR3DL3/CD158z Met1-Leu322 Accession # Q8N743
Conjugate	Alexa Fluor 647 Excitation Wavelength: 650 nm Emission Wavelength: 668 nm
Formulation	Supplied in a saline solution containing BSA and Sodium Azide. See Certificate of Analysis for details. *Contains <0.1% Sodium Azide, which is not hazardous at this concentration according to GHS classifications. Refer to the Safety Data Sheet (SDS) for additional information and handling instructions.

APPLICATIONS

Please Note: Optimal dilutions should be determined by each laboratory for each application. General Protocols are available in the Technical Information section on our website.

	Recommended Concentration	Sample
Flow Cytometry	5 µL/10 ⁶ cells	See Below

DATA



PREPARATION AND STORAGE

Shipping	The product is shipped with polar packs. Upon receipt, store it immediately at the temperature recommended below.
Stability & Storage	Protect from light. Do not freeze. ● 12 months from date of receipt, 2 to 8 °C as supplied.

BACKGROUND

KIR3DL3 is a member of the Killer-Immunoglobulin-like Receptor (KIR) family, a functionally diverse family of transmembrane receptors expressed primarily on NK cells. KIR3DL3 is a "framework" KIR gene, and is present in all individuals, in contrast to non-framework KIRs, whose gene content varies by KIR haplotype. KIR3DL3 is expressed at low or undetectable levels in peripheral blood NK cells, but expression can be induced in NK cell lines by demethylation agents, indicating that promoter DNA methylation inhibits KIR3DL3 transcription. Despite the lack of evidence for surface protein expression, KIR3DL3 mRNA expression has been detected in both decidual and peripheral blood NK cells in normal, disease-free conditions. Over amino acids (aa) 1-322, human KIR3DL3 shares 47% aa sequence identity with mouse KIR3DL1.

PRODUCT SPECIFIC NOTICES

This product is provided under an agreement between Life Technologies Corporation and R&D Systems, Inc, and the manufacture, use, sale or import of this product is subject to one or more US patents and corresponding non-US equivalents, owned by Life Technologies Corporation and its affiliates. The purchase of this product conveys to the buyer the non-transferable right to use the purchased amount of the product and components of the product only in research conducted by the buyer (whether the buyer is an academic or for-profit entity). The sale of this product is expressly conditioned on the buyer not using the product or its components (1) in manufacturing; (2) to provide a service, information, or data to an unaffiliated third party for payment; (3) for therapeutic, diagnostic or prophylactic purposes; (4) to resell, sell, or otherwise transfer this product or its components to any third party, or for any other commercial purpose. Life Technologies Corporation will not assert a claim against the buyer of the infringement of the above patents based on the manufacture, use or sale of a commercial product developed in research by the buyer in which this product or its components was employed, provided that neither this product nor any of its components was used in the manufacture of such product. For information on purchasing a license to this product for purposes other than research, contact Life Technologies Corporation, Cell Analysis Business Unit, Business Development, 29851 Willow Creek Road, Eugene, OR 97402, Tel: (541) 465-8300. Fax: (541) 335-0354.