

## DESCRIPTION

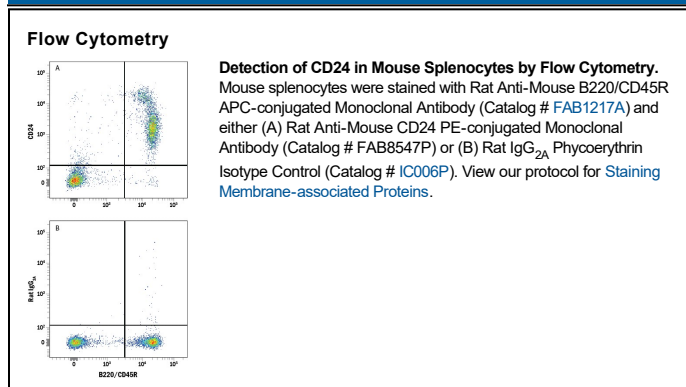
|                           |  |
|---------------------------|--|
| <b>Species Reactivity</b> | Mouse  |
| <b>Specificity</b>        | Detects mouse CD24a in direct ELISAs.  |
| <b>Source</b>             | Recombinant Monoclonal Rat IgG <sub>2A</sub> Clone # 910019  |
| <b>Purification</b>       | Protein A or G purified from cell culture supernatant  |
| <b>Immunogen</b>          | Peptide sequence spanning a portion of the extracellular region<br>Accession # P24807  |
| <b>Conjugate</b>          | Phycoerythrin<br>Excitation Wavelength: 488 nm<br>Emission Wavelength: 565-605 nm  |
| <b>Formulation</b>        | Supplied in a saline solution containing BSA and Sodium Azide. See Certificate of Analysis for details.<br><br>*Contains <0.1% Sodium Azide, which is not hazardous at this concentration according to GHS classifications. Refer to the Safety Data Sheet (SDS) for additional information and handling instructions. |

## APPLICATIONS

**Please Note:** Optimal dilutions should be determined by each laboratory for each application. [General Protocols](#) are available in the [Technical Information](#) section on our website.

|                       | Recommended Concentration       | Sample    |
|-----------------------|---------------------------------|-----------|
| <b>Flow Cytometry</b> | 0.25-1 µg/10 <sup>6</sup> cells | See Below |

## DATA



## PREPARATION AND STORAGE

|                                |  |
|--------------------------------|--|
| <b>Shipping</b>                | The product is shipped with polar packs. Upon receipt, store it immediately at the temperature recommended below.                                    |
| <b>Stability &amp; Storage</b> | <b>Protect from light. Do not freeze.</b> <ul style="list-style-type: none"> <li>● 12 months from date of receipt, 2 to 8 °C as supplied.</li> </ul> |

## BACKGROUND

CD24, also known as Heat Stable Antigen (HSA), is a heavily and variably glycosylated 35-60 kDa GPI-linked sialoprotein. CD24 is expressed on B cells, T cells, keratinocytes, and myofiber synaptic nuclei and is upregulated in a wide variety of cancers. It is also a marker for exosomes released into the urine and amniotic fluid. CD24 binds to P-Selectin on activated platelets and vascular endothelial cells. CD24 ligation induces tumor cell apoptosis and is important for the deletion of autoreactive T cells. Mature mouse CD24 shares 30% aa sequence identity with human CD24.