

DESCRIPTION

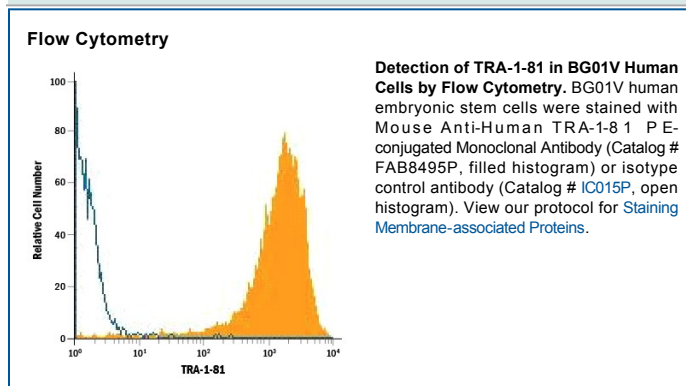
Species Reactivity	Human
Specificity	Detects human TRA-1-81 in flow cytometry.
Source	Monoclonal Mouse IgM Clone # TRA-1-81
Purification	Protein A or G purified from hybridoma culture supernatant
Immunogen	Human embryonal carcinoma cell line 2102Ep
Conjugate	Phycoerythrin Excitation Wavelength: 488 nm Emission Wavelength: 565-605 nm
Formulation	Supplied in a saline solution containing BSA and Sodium Azide. See Certificate of Analysis for details. *Contains <0.1% Sodium Azide, which is not hazardous at this concentration according to GHS classifications. Refer to the Safety Data Sheet (SDS) for additional information and handling instructions.

APPLICATIONS

Please Note: Optimal dilutions should be determined by each laboratory for each application. *General Protocols* are available in the *Technical Information* section on our website.

	Recommended Concentration	Sample
Flow Cytometry	10 μ L/10 ⁶ cells	See Below

DATA



PREPARATION AND STORAGE

Shipping The product is shipped with polar packs. Upon receipt, store it immediately at the temperature recommended below.

Stability & Storage **Protect from light. Do not freeze.**

- 12 months from date of receipt, 2 to 8 °C as supplied.

BACKGROUND

The TRA-1-81 antibody reacts with a high-molecular-mass carbohydrate epitope on the surface of human embryonal carcinoma (EC), embryonic germ (EG), embryonic stem (ES), and induced pluripotent stem (iPS) cells. TRA-1-81 is an epitope expressed on podocalyxin, also known as Podocalyxin-Like Protein-1 (PCLP1 or PODXL), a type I transmembrane glycoprotein.