

## DESCRIPTION

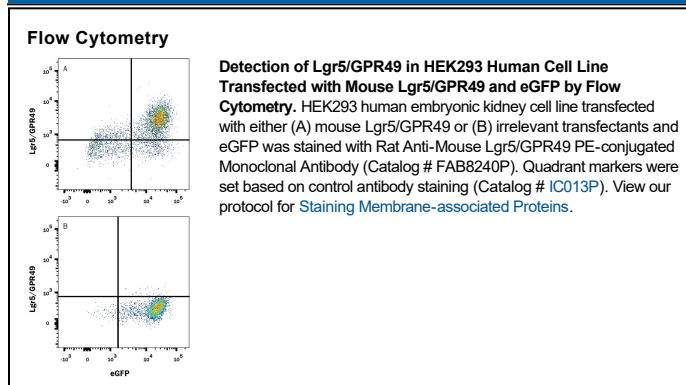
<b>Species Reactivity</b>	Mouse
<b>Specificity</b>	Detects mouse Lgr5/GPR49 in ELISAs. Stains mouse Lgr5 transfected cells but not irrelevant transfectants in Flow Cytometry and Immunocytochemistry. This antibody, also known as "RD20", has been found to detect an epitope in C-terminal LRR cap of Lgr5 (Ref. 1).
<b>Source</b>	Monoclonal Rat IgG <sub>2B</sub> Clone # 803420
<b>Purification</b>	Protein A or G purified from hybridoma culture supernatant
<b>Immunogen</b>	<i>E. coli</i> -derived recombinant mouse Lgr5/GPR49 Lys375-Pro547 Accession # Q9Z1P4
<b>Conjugate</b>	Phycoerythrin Excitation Wavelength: 488 nm Emission Wavelength: 565-605 nm
<b>Formulation</b>	Supplied in a saline solution containing BSA and Sodium Azide. See Certificate of Analysis for details.  *Contains <0.1% Sodium Azide, which is not hazardous at this concentration according to GHS classifications. Refer to the Safety Data Sheet (SDS) for additional information and handling instructions.

## APPLICATIONS

**Please Note:** Optimal dilutions should be determined by each laboratory for each application. *General Protocols* are available in the *Technical Information* section on our website.

	Recommended Concentration	Sample
<b>Flow Cytometry</b>	0.25-1 µg/10 <sup>6</sup> cells	See Below

## DATA



## PREPARATION AND STORAGE

**Shipping** The product is shipped with polar packs. Upon receipt, store it immediately at the temperature recommended below.

**Stability & Storage** **Protect from light. Do not freeze.**

- 12 months from date of receipt, 2 to 8 °C as supplied.

## BACKGROUND

Leucine-rich repeat G-protein-coupled receptor 5 (Lgr5), also called GPR49, is a 907 amino acid (aa), approximately 97 kDa (calculated), seven-transmembrane glycoprotein receptor in the Lgr family of cell surface receptors. The subfamily of Lgrs comprising Lgr4, Lgr5, and Lgr6 are G-protein-independent mediators of the potentiating effect of R-Spondins on Wnt signaling (2). Lgr5 binds and forms complexes with R-Spondins, Frizzled Wnt receptors and LRP Wnt co-receptors. The region of the mouse Lgr5 long extracellular domain used as an immunogen shares 90% and 95% amino acid sequence identity with human and rat Lgr5, respectively. Lgr5 is found on embryonic and adult epithelial stem cells (3). Lgr5<sup>+</sup> stem cells can produce all epithelial cell types of the intestinal crypts (4). It is upregulated in stem cells that give rise to cancers such as intestinal, hepatocellular, pancreatic and ovarian carcinomas (5,6). This antibody has been referred to as "RD20" by Peng *et al.* (1).

### References:

1. Peng *et al.* (2013) Cell Rep. **3(6)**:1885.
2. de Lau *et al.* (2014) Genes Dev. **28(4)**:305.
3. Barker *et al.* (2013) Development **140(12)**:2484.
4. Clevers (2013) Nature **495(7439)**:53.
5. Wu *et al.* (2014) Nat Commun **5**:3149.
6. Jang *et al.* (2013) PLoS One **8(12)**:e82390495.