

DESCRIPTION

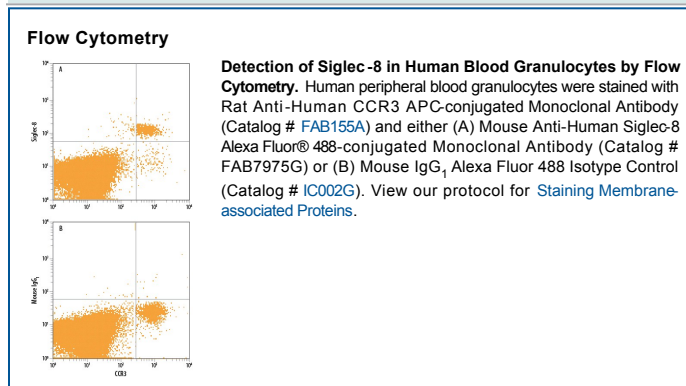
| | |
|---------------------------|--|
| Species Reactivity | Human |
| Specificity | Detects human Siglec-8 in ELISAs. In direct ELISAs, no cross-reactivity with recombinant human Siglec-7, -9, or -14 is observed. |
| Source | Monoclonal Mouse IgG ₁ Clone # 837535 |
| Purification | Protein A or G purified from hybridoma culture supernatant |
| Immunogen | Mouse myeloma cell line NS0-derived recombinant human Siglec-8 Met17-Ala363 Accession # Q9NYZ4 |
| Conjugate | Alexa Fluor 488 Excitation Wavelength: 488 nm Emission Wavelength: 515-545 nm |
| Formulation | Supplied in a saline solution containing BSA and Sodium Azide. See Certificate of Analysis for details. *Contains <0.1% Sodium Azide, which is not hazardous at this concentration according to GHS classifications. Refer to the Safety Data Sheet (SDS) for additional information and handling instructions. |

APPLICATIONS

Please Note: Optimal dilutions should be determined by each laboratory for each application. *General Protocols* are available in the *Technical Information* section on our website.

| | Recommended Concentration | Sample |
|-----------------------|---------------------------|-----------|
| Flow Cytometry | 5 µg/mL | See Below |

DATA



PREPARATION AND STORAGE

Shipping The product is shipped with polar packs. Upon receipt, store it immediately at the temperature recommended below.

Stability & Storage **Protect from light. Do not freeze.**

- 12 months from date of receipt, 2 to 8 °C as supplied.

BACKGROUND

Siglec-8 (Sialic acid-binding Ig-like lectin 8), formerly called SAF-2 (sialoadhesin family member 2) and designated CD329, is a 75 kDa member of the inhibitory CD33-related SIGLEC family within the Ig superfamily of proteins. An alternately spliced 48 kDa short form lacks most of the intracellular domain, while another isoform lacks the second of three extracellular Ig domains, representing amino acids (aa) 152-245 of the 499 aa long form. Siglec-8 is expressed exclusively on eosinophils, mast cells, and weakly on basophils, and is a marker for eosinophil terminal differentiation. It specifically recognizes 6' sulfated sialyl Lewis X carbohydrate structures. Engagement results in eosinophils apoptosis, or mast cell inhibition of degranulation. Eosinophil Siglec F is the mouse paralog of human Siglec-8, but shares <40% amino acid sequence identity.

PRODUCT SPECIFIC NOTICES

This product is provided under an agreement between Life Technologies Corporation and R&D Systems, Inc, and the manufacture, use, sale or import of this product is subject to one or more US patents and corresponding non-US equivalents, owned by Life Technologies Corporation and its affiliates. The purchase of this product conveys to the buyer the non-transferable right to use the purchased amount of the product and components of the product only in research conducted by the buyer (whether the buyer is an academic or for-profit entity). The sale of this product is expressly conditioned on the buyer not using the product or its components (1) in manufacturing; (2) to provide a service, information, or data to an unaffiliated third party for payment; (3) for therapeutic, diagnostic or prophylactic purposes; (4) to resell, sell, or otherwise transfer this product or its components to any third party, or for any other commercial purpose. Life Technologies Corporation will not assert a claim against the buyer of the infringement of the above patents based on the manufacture, use or sale of a commercial product developed in research by the buyer in which this product or its components was employed, provided that neither this product nor any of its components was used in the manufacture of such product. For information on purchasing a license to this product for purposes other than research, contact Life Technologies Corporation, Cell Analysis Business Unit, Business Development, 29851 Willow Creek Road, Eugene, OR 97402, Tel: (541) 465-8300. Fax: (541) 335-0354.