

DESCRIPTION

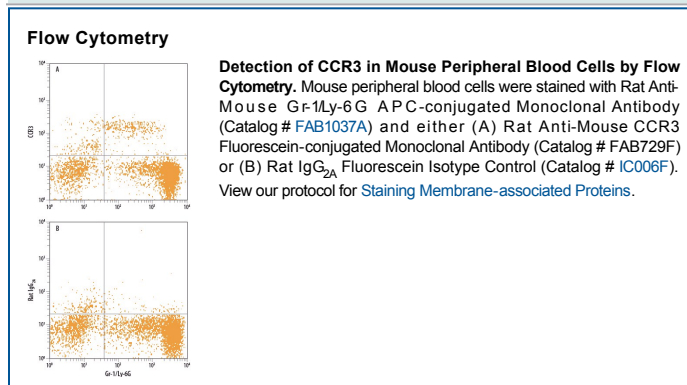
Species Reactivity	Mouse
Specificity	Detects mouse CCR3. Specifically stains mouse CCR3 transfectants but not the parental cell lines. Does not cross-react with Y3 cells transfected with human CCR3.
Source	Monoclonal Rat IgG _{2A} Clone # 83101
Purification	Protein A or G purified from hybridoma culture supernatant
Immunogen	Y3 rat myeloid cell line transfected with mouse CCR3 Met1-Phe359 Accession # P51678
Conjugate	Fluorescein Excitation Wavelength: 488 nm Emission Wavelength: 515-545 nm
Formulation	Supplied in a saline solution containing BSA and Sodium Azide. See Certificate of Analysis for details. *Contains <0.1% Sodium Azide, which is not hazardous at this concentration according to GHS classifications. Refer to the Safety Data Sheet (SDS) for additional information and handling instructions.

APPLICATIONS

Please Note: Optimal dilutions should be determined by each laboratory for each application. *General Protocols* are available in the *Technical Information* section on our website.

	Recommended Concentration	Sample
Flow Cytometry	10 µL/10 ⁶ cells	See Below

DATA



PREPARATION AND STORAGE

Shipping	The product is shipped with polar packs. Upon receipt, store it immediately at the temperature recommended below.
Stability & Storage	Protect from light. Do not freeze. <ul style="list-style-type: none"> ● 12 months from date of receipt, 2 to 8 °C as supplied.

BACKGROUND

CCR3 is a G protein-linked seven transmembrane receptor that is activated by several different chemokines. It is expressed on subsets of granulocytes, monocytes, T cells and epithelial cells.