

#### DESCRIPTION

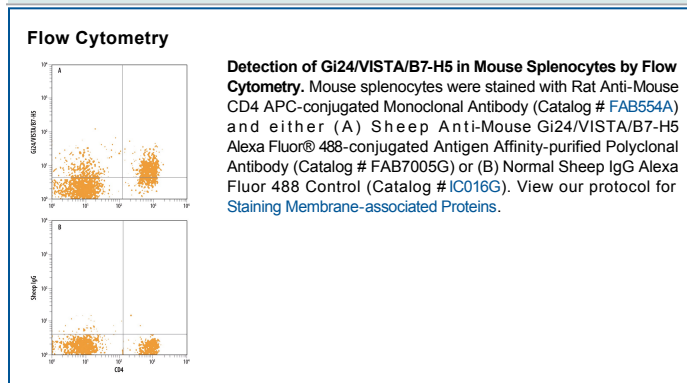
<b>Species Reactivity</b>	Mouse
<b>Specificity</b>	Detects mouse Gi24/VISTA/B7-H5 in direct ELISAs and Western blots. In direct ELISAs, approximately 25% cross-reactivity with recombinant human Gi24/VISTA/B7-H5 is observed.
<b>Source</b>	Polyclonal Sheep IgG
<b>Purification</b>	Antigen Affinity-purified
<b>Immunogen</b>	Mouse myeloma cell line NS0-derived recombinant mouse Gi24/VISTA/B7-H5 Phe33-Ala191 Accession # Q9D659
<b>Conjugate</b>	Alexa Fluor 488 Excitation Wavelength: 488 nm Emission Wavelength: 515-545 nm
<b>Formulation</b>	Supplied in a saline solution containing BSA and Sodium Azide. See Certificate of Analysis for details.  *Contains <0.1% Sodium Azide, which is not hazardous at this concentration according to GHS classifications. Refer to the Safety Data Sheet (SDS) for additional information and handling instructions.

#### APPLICATIONS

**Please Note:** Optimal dilutions should be determined by each laboratory for each application. *General Protocols* are available in the *Technical Information* section on our website.

	<b>Recommended Concentration</b>	<b>Sample</b>
<b>Flow Cytometry</b>	5 $\mu$ L/ $10^6$ cells	See Below

#### DATA



#### PREPARATION AND STORAGE

**Shipping** The product is shipped with polar packs. Upon receipt, store it immediately at the temperature recommended below.

**Stability & Storage** **Protect from light. Do not freeze.**

- 12 months from date of receipt, 2 to 8 °C as supplied.

#### BACKGROUND

Platelet Receptor Gi24 (also known as Dies1 [Differentiation of ESC-1], SISP1 and C10orf54) is a 55-65 kDa member of the Ig superfamily. It is a transmembrane molecule expressed in bone, on embryonic stem cells (ESCs), and on tumor cell surfaces. On ESCs, Gi24 appears to positively interact with BMP4, potentiating BMP signaling and the transition from an undifferentiated to a differentiated state. On tumor cells, Gi24 both promotes MT1-MMP expression and activity, and serves as a substrate for MT1-MMP. This increases the potential for cell motility. Mature mouse Gi24 is a 277 amino acid (aa) type I transmembrane glycoprotein (aa 33-309). It contains a 149 aa extracellular region (aa 33-191) with one V-type Ig-like domain (aa 33-161) and a 97 aa cytoplasmic domain. Based on human Gi24, mouse Gi24 will likely undergo proteolytic cleavage by MT1-MMP, generating a soluble 30 kDa extracellular fragment, plus a 25-30 kDa membrane-bound fragment. There are two potential isoform variants. One contains a deletion of aa 127-187, while another shows an alternative start site at Met82. Over aa 33-191, mouse Gi24/Dies1 shares 78% and 70% aa identity with rat and human Gi24, respectively.

#### PRODUCT SPECIFIC NOTICES

This product is provided under an agreement between Life Technologies Corporation and R&D Systems, Inc, and the manufacture, use, sale or import of this product is subject to one or more US patents and corresponding non-US equivalents, owned by Life Technologies Corporation and its affiliates. The purchase of this product conveys to the buyer the non-transferable right to use the purchased amount of the product and components of the product only in research conducted by the buyer (whether the buyer is an academic or for-profit entity). The sale of this product is expressly conditioned on the buyer not using the product or its components (1) in manufacturing; (2) to provide a service, information, or data to an unaffiliated third party for payment; (3) for therapeutic, diagnostic or prophylactic purposes; (4) to resell, sell, or otherwise transfer this product or its components to any third party, or for any other commercial purpose. Life Technologies Corporation will not assert a claim against the buyer of the infringement of the above patents based on the manufacture, use or sale of a commercial product developed in research by the buyer in which this product or its components was employed, provided that neither this product nor any of its components was used in the manufacture of such product. For information on purchasing a license to this product for purposes other than research, contact Life Technologies Corporation, Cell Analysis Business Unit, Business Development, 29851 Willow Creek Road, Eugene, OR 97402, Tel: (541) 465-8300. Fax: (541) 335-0354.