

DESCRIPTION

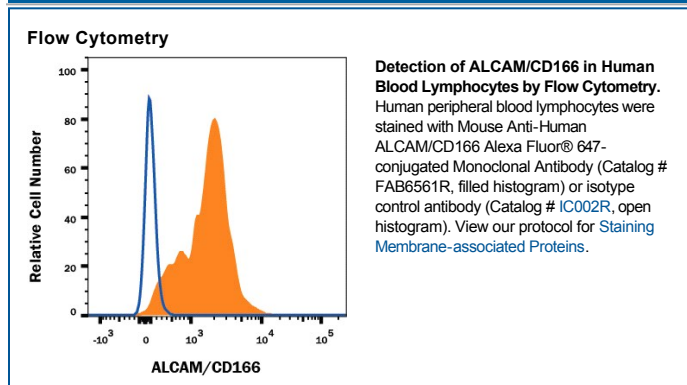
Species Reactivity	Human
Specificity	Detects human ALCAM/CD166 in Western blots. Shows approximately 50% cross-reactivity with recombinant mouse OCAM and no cross-reactivity with recombinant human (rh) BCAM, rhEpCAM, rhMCAM, or rhNCAM-L1.
Source	Monoclonal Mouse IgG ₁ Clone # 105902
Purification	Protein A or G purified from ascites
Immunogen	Mouse myeloma cell line NS0-derived recombinant human ALCAM/CD166 Trp28-Ala526 Accession # Q13740
Conjugate	Alexa Fluor 647 Excitation Wavelength: 650 nm Emission Wavelength: 668 nm
Formulation	Supplied 0.2 mg/mL in a saline solution containing BSA and Sodium Azide. See Certificate of Analysis for details. *Contains <0.1% Sodium Azide, which is not hazardous at this concentration according to GHS classifications. Refer to the Safety Data Sheet (SDS) for additional information and handling instructions.

APPLICATIONS

Please Note: Optimal dilutions should be determined by each laboratory for each application. *General Protocols* are available in the *Technical Information* section on our website.

	Recommended Concentration	Sample
Flow Cytometry	0.25-1 µg/10 ⁶ cells	See Below

DATA



PREPARATION AND STORAGE

Shipping	The product is shipped with polar packs. Upon receipt, store it immediately at the temperature recommended below.
Stability & Storage	Protect from light. Do not freeze. ● 12 months from date of receipt, 2 to 8 °C as supplied.

BACKGROUND

ALCAM, activated leukocyte cell adhesion molecule, is a type I membrane glycoprotein and a member of the immunoglobulin supergene family. It is also known as CD166, MEMD, SC-1/DM-GRASP/BEN in the chicken, and KG-CAM in the rat. ALCAM is expressed on thymic epithelial cells, activated B and T cells, and monocytes. ALCAM can bind itself homotypically and is also capable of binding CD6, NgCAM, and other, as of yet, unidentified brain proteins. The ALCAM/CD6 interaction may be involved in T cell development and T cell regulation. Additionally, ALCAM/CD6 and ALCAM/NgCAM interactions may play roles in the nervous system. ALCAM has also been observed to be upregulated on highly metastasizing melanoma cell lines and may play a role in tumor migration. ALCAM is a 583 amino acid (aa) protein consisting of a 27 aa signal peptide, a 500 aa extracellular domain, a 24 aa transmembrane domain and a 32 aa cytoplasmic domain. The extracellular domain of ALCAM contains 5 Ig-like domains.

References:

1. Bowen, M.A. *et al.* (1995) J. Exp. Med. **181**:2213.
2. Aruffo, A. *et al.* (1997) Immunol. Today **18**:498.
3. Degen, W.G. *et al.* (1998) Am. J. Pathol. **152**:805.

PRODUCT SPECIFIC NOTICES

This product is provided under an agreement between Life Technologies Corporation and R&D Systems, Inc. and the manufacture, use, sale or import of this product is subject to one or more US patents and corresponding non-US equivalents, owned by Life Technologies Corporation and its affiliates. The purchase of this product conveys to the buyer the non-transferable right to use the purchased amount of the product and components of the product only in research conducted by the buyer (whether the buyer is an academic or for-profit entity). The sale of this product is expressly conditioned on the buyer not using the product or its components (1) in manufacturing; (2) to provide a service, information, or data to an unaffiliated third party for payment; (3) for therapeutic, diagnostic or prophylactic purposes; (4) to resell, sell, or otherwise transfer this product or its components to any third party, or for any other commercial purpose. Life Technologies Corporation will not assert a claim against the buyer of the infringement of the above patents based on the manufacture, use or sale of a commercial product developed in research by the buyer in which this product or its components was employed, provided that neither this product nor any of its components was used in the manufacture of such product. For information on purchasing a license to this product for purposes other than research, contact Life Technologies Corporation, Cell Analysis Business Unit, Business Development, 29851 Willow Creek Road, Eugene, OR 97402, Tel: (541) 465-8300. Fax: (541) 335-0354.