

### DESCRIPTION

<b>Species Reactivity</b>	Human
<b>Specificity</b>	Detects human E-Selectin/P-Selectin (CD62E/P). Binds to COS cells transfected with human E-Selectin or human P-Selectin. It does not bind to CHO cells transfected with human ICAM-1, L-Selectin, PECAM-1 or VCAM-1.
<b>Source</b>	Monoclonal Mouse IgG <sub>1</sub> Clone # BBIG-E6 (13D5)
<b>Purification</b>	Protein A or G purified from hybridoma culture supernatant
<b>Immunogen</b>	Activated HUVEC human umbilical vein endothelial cells
<b>Conjugate</b>	Phycoerythrin Excitation Wavelength: 488 nm Emission Wavelength: 565-605 nm
<b>Formulation</b>	Supplied in a saline solution containing BSA and Sodium Azide. See Certificate of Analysis for details.

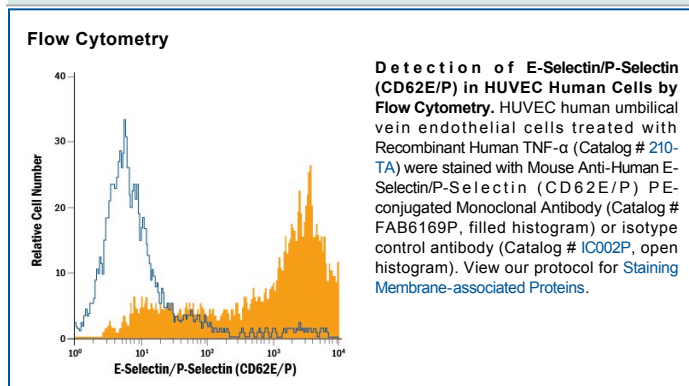
\*Contains <0.1% Sodium Azide, which is not hazardous at this concentration according to GHS classifications. Refer to the Safety Data Sheet (SDS) for additional information and handling instructions.

### APPLICATIONS

**Please Note:** Optimal dilutions should be determined by each laboratory for each application. *General Protocols* are available in the *Technical Information* section on our website.

	Recommended Concentration	Sample
<b>Flow Cytometry</b>	10 µL/10 <sup>6</sup> cells	See Below

### DATA



### PREPARATION AND STORAGE

<b>Shipping</b>	The product is shipped with polar packs. Upon receipt, store it immediately at the temperature recommended below.
<b>Stability &amp; Storage</b>	<b>Protect from light. Do not freeze.</b> <ul style="list-style-type: none"> <li>● 12 months from date of receipt, 2 to 8 °C as supplied.</li> </ul>

### BACKGROUND

E-Selectin (CD62E) and P-Selectin (CD62P) are related (44% amino acid sequence identity) adhesion molecules containing multiple short complement-like repeats and an N-terminal C-type lectin domain in their extracellular regions. E-Selectin is expressed on activated vascular endothelial cells and P-Selectin occurs on activated platelets and endothelial cells.