

DESCRIPTION

Species Reactivity	Human
Specificity	Detects human E-Selectin/P-Selectin (CD62E/P). Binds to COS cells transfected with human E-Selectin or human P-Selectin. It does not bind to CHO cells transfected with human ICAM-1, L-Selectin, PECAM-1 or VCAM-1.
Source	Monoclonal Mouse IgG ₁ Clone # BBIG-E6 (13D5)
Purification	Protein A or G purified from hybridoma culture supernatant
Immunogen	Activated HUVEC human umbilical vein endothelial cells
Conjugate	Allophycocyanin Excitation Wavelength: 620-650 nm Emission Wavelength: 660-670 nm
Formulation	Supplied in a saline solution containing BSA and Sodium Azide. See Certificate of Analysis for details.

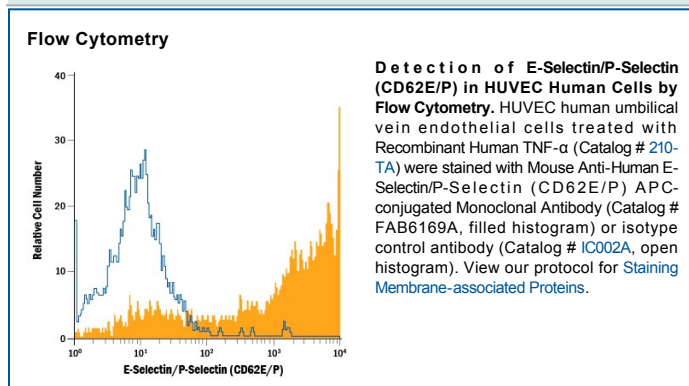
*Contains <0.1% Sodium Azide, which is not hazardous at this concentration according to GHS classifications. Refer to the Safety Data Sheet (SDS) for additional information and handling instructions.

APPLICATIONS

Please Note: Optimal dilutions should be determined by each laboratory for each application. *General Protocols* are available in the *Technical Information* section on our website.

	Recommended Concentration	Sample
Flow Cytometry	10 µL/10 ⁶ cells	See Below

DATA



PREPARATION AND STORAGE

Shipping	The product is shipped with polar packs. Upon receipt, store it immediately at the temperature recommended below.
Stability & Storage	Protect from light. Do not freeze. <ul style="list-style-type: none"> ● 12 months from date of receipt, 2 to 8 °C as supplied.

BACKGROUND

E-Selectin (CD62E) and P-Selectin (CD62P) are related (44% amino acid sequence identity) adhesion molecules containing multiple short complement-like repeats and an N-terminal C-type lectin domain in their extracellular regions. E-Selectin is expressed on activated vascular endothelial cells and P-Selectin occurs on activated platelets and endothelial cells.