

DESCRIPTION

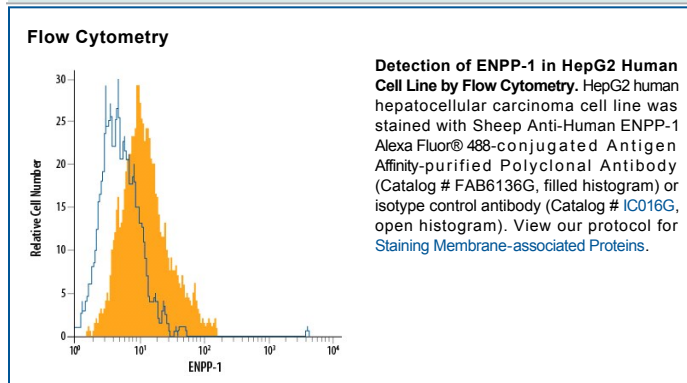
Species Reactivity	Human
Specificity	Detects human ENPP-1 in direct ELISAs and Western blots. In direct ELISAs, less than 3% cross-reactivity with recombinant human ENPP-2 and recombinant mouse ENPP-2 is observed after removal of cross-reactivity with human ENPP-2.
Source	Polyclonal Sheep IgG
Purification	Antigen Affinity-purified
Immunogen	Mouse myeloma cell line NS0-derived recombinant human ENPP-2-1-2 Asp49-Trp144 (ENPP-2), Val191-Leu591 (ENPP-1), Asn532-Ile863 (ENPP-2). Cross-reactivity with human ENPP-2 was removed from the final product. Accession # Q13822 (ENPP-2) P22413 (ENPP-1)
Conjugate	Alexa Fluor 488 Excitation Wavelength: 488 nm Emission Wavelength: 515-545 nm
Formulation	Supplied in a saline solution containing BSA and Sodium Azide. See Certificate of Analysis for details. *Contains <0.1% Sodium Azide, which is not hazardous at this concentration according to GHS classifications. Refer to the Safety Data Sheet (SDS) for additional information and handling instructions.

APPLICATIONS

Please Note: Optimal dilutions should be determined by each laboratory for each application. *General Protocols* are available in the *Technical Information* section on our website.

	Recommended Concentration	Sample
Flow Cytometry	5 µL/10 ⁶ cells	See Below

DATA



PREPARATION AND STORAGE

Shipping	The product is shipped with polar packs. Upon receipt, store it immediately at the temperature recommended below.
Stability & Storage	Protect from light. Do not freeze. <ul style="list-style-type: none"> ● 12 months from date of receipt, 2 to 8 °C as supplied.

BACKGROUND

Ectonucleotide pyrophosphatase/phosphodiesterase 1 (ENPP-1) is a transmembrane glycoprotein that hydrolyzes nucleotides and nucleotide derivatives with the formation of nucleotide-5'-monophosphates. It is inserted into the plasma membrane by an N-terminal transmembrane domain. Human ENPP-1 has a small N-terminal cytoplasmic domain and a large C-terminal region containing two somatomedin B-like domains, a catalytic domain and a nuclease-like domain in the extracellular space (1). Defects in the ENPP-1 gene cause arterial calcification and bone mineralization abnormalities (2). ENPP-1 polymorphism or overexpression is also associated with obesity, type II diabetes and insulin resistance, which makes modulation of ENPP-1 activity one of the targets to treat insulin resistance and related diseases (1).

References:

1. Goldfine, I.D. *et al.* (2010) *Endocrine Reviews*. **29**:62.
2. Hesse, L. *et al.* (2002) *Proc. Natl. Acad. Sci.* **99**:9445.

PRODUCT SPECIFIC NOTICES

This product is provided under an agreement between Life Technologies Corporation and R&D Systems, Inc, and the manufacture, use, sale or import of this product is subject to one or more US patents and corresponding non-US equivalents, owned by Life Technologies Corporation and its affiliates. The purchase of this product conveys to the buyer the non-transferable right to use the purchased amount of the product and components of the product only in research conducted by the buyer (whether the buyer is an academic or for-profit entity). The sale of this product is expressly conditioned on the buyer not using the product or its components (1) in manufacturing; (2) to provide a service, information, or data to an unaffiliated third party for payment; (3) for therapeutic, diagnostic or prophylactic purposes; (4) to resell, sell, or otherwise transfer this product or its components to any third party, or for any other commercial purpose. Life Technologies Corporation will not assert a claim against the buyer of the infringement of the above patents based on the manufacture, use or sale of a commercial product developed in research by the buyer in which this product or its components was employed, provided that neither this product nor any of its components was used in the manufacture of such product. For information on purchasing a license to this product for purposes other than research, contact Life Technologies Corporation, Cell Analysis Business Unit, Business Development, 29851 Willow Creek Road, Eugene, OR 97402, Tel: (541) 465-8300. Fax: (541) 335-0354.