

## DESCRIPTION

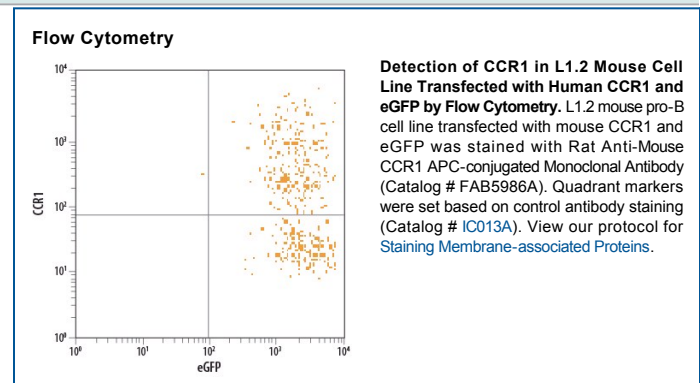
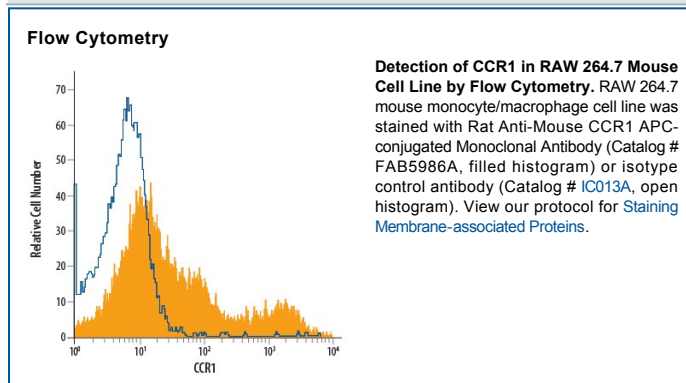
<b>Species Reactivity</b>	Mouse
<b>Specificity</b>	Detects mouse CCR1 in direct ELISAs and Western blots. In direct ELISAs and Western blots, no cross-reactivity with recombinant mouse CCR4, 5, or 8 is observed.
<b>Source</b>	Monoclonal Rat IgG <sub>2B</sub> Clone # 643854
<b>Purification</b>	Protein A or G purified from hybridoma culture supernatant
<b>Immunogen</b>	<i>E. coli</i> -derived recombinant mouse CCR1 Extracellular regions (aa 1-34, aa 92-107, aa 172-192, aa 265-281) Accession # P51675
<b>Conjugate</b>	Allophycocyanin Excitation Wavelength: 620-650 nm Emission Wavelength: 660-670 nm
<b>Formulation</b>	Supplied in a saline solution containing BSA and Sodium Azide. See Certificate of Analysis for details.  *Contains <0.1% Sodium Azide, which is not hazardous at this concentration according to GHS classifications. Refer to the Safety Data Sheet (SDS) for additional information and handling instructions.

## APPLICATIONS

**Please Note:** Optimal dilutions should be determined by each laboratory for each application. *General Protocols* are available in the *Technical Information* section on our website.

	<b>Recommended Concentration</b>	<b>Sample</b>
<b>Flow Cytometry</b>	10 µL/10 <sup>6</sup> cells	See Below

## DATA



## PREPARATION AND STORAGE

**Shipping** The product is shipped with polar packs. Upon receipt, store it immediately at the temperature recommended below.

**Stability & Storage** **Protect from light. Do not freeze.**

- 12 months from date of receipt, 2 to 8 °C as supplied.

## BACKGROUND

CCR1 (C-C chemokine receptor 1; also MIP-1a receptor and CD191) is a 43 kDa member of the GPCR #1 family of transmembrane proteins. Mouse CCR1 is expressed on osteoclasts, IL-13<sup>+</sup> T cells, neutrophils, bone marrow-derived mast cells, eosinophils, monocytes and vascular intimal smooth muscle cells. Multiple chemokines are reported to bind to CCR1. MIP-1a/CCL3 and RANTES/CCL5 are natural ligands, while CCL15, CCL9 and CCL23 are potent antagonists after N-terminal processing. Mouse CCR1 is a 7-transmembrane protein that is 355 amino acids (aa) in length. It contains a 34 aa N-terminal extracellular domain plus a 50 aa C-terminal cytoplasmic tail. Over aa sequences 1-34, 92-107, 172-192 and 265-281 collectively, mouse CCR1 shares 76% and 89% aa identity with human and rat CCR1, respectively.