

DESCRIPTION

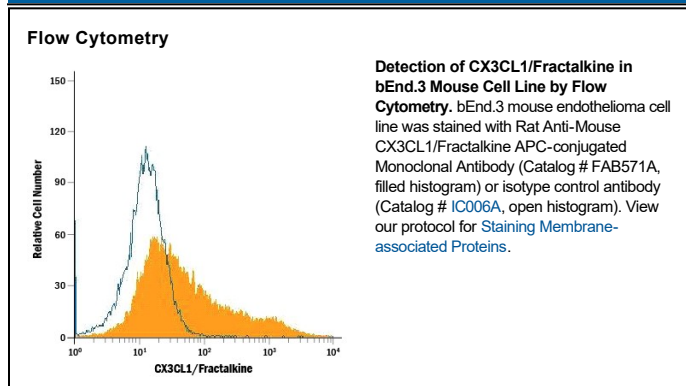
Species Reactivity	Mouse
Specificity	Detects mouse CX3CL1/Fractalkine in Western blots. In direct ELISAs, this antibody shows 100% cross-reactivity with the chemokine domain of recombinant human (rh) CX3CL1, 13% cross-reactivity with rhCX3CL1 (full length), and 50% cross-reactivity with recombinant rat CX3CL1.
Source	Monoclonal Rat IgG _{2A} Clone # 126315
Purification	Protein A or G purified from hybridoma culture supernatant
Immunogen	Mouse myeloma cell line NS0-derived recombinant mouse CX3CL1/Fractalkine, <i>S. frugiperda</i> insect ovarian cell line Sf 21-derived recombinant mouse CX3CL1/Fractalkine, and <i>E. coli</i> -derived recombinant mouse CX3CL1/Fractalkine
Conjugate	Allophycocyanin Excitation Wavelength: 620-650 nm Emission Wavelength: 660-670 nm
Formulation	Supplied in a saline solution containing BSA and Sodium Azide. See Certificate of Analysis for details. *Contains <0.1% Sodium Azide, which is not hazardous at this concentration according to GHS classifications. Refer to the Safety Data Sheet (SDS) for additional information and handling instructions.

APPLICATIONS

Please Note: Optimal dilutions should be determined by each laboratory for each application. *General Protocols* are available in the *Technical Information* section on our website.

	Recommended Concentration	Sample
Flow Cytometry	10 μ L/10 ⁶ cells	See Below

DATA



PREPARATION AND STORAGE

Shipping	The product is shipped with polar packs. Upon receipt, store it immediately at the temperature recommended below.
Stability & Storage	Protect from light. Do not freeze. <ul style="list-style-type: none"> ● 12 months from date of receipt, 2 to 8 °C as supplied.

BACKGROUND

CX3CL1, also known as Fractalkine, is a type I transmembrane protein in which a chemokine domain possessing a unique C-X3-C cysteine motif is tethered on a long mucin-like stalk. Although membrane-bound, it can also be released as a soluble molecule upon proteolysis at a membrane proximal site.