

## DESCRIPTION

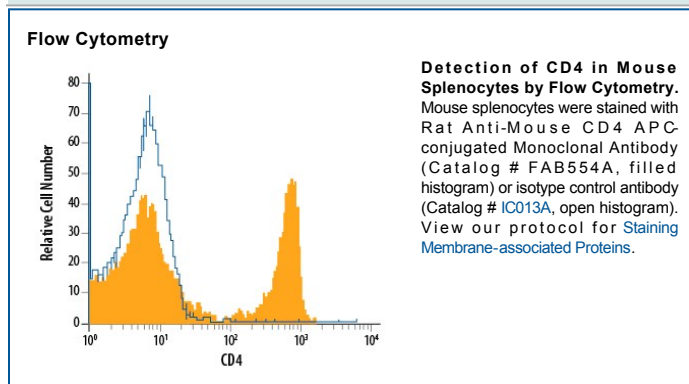
<b>Species Reactivity</b>	Mouse
<b>Specificity</b>	Reacts with mouse CD4, an antigen co-receptor on the T cell surface which interacts with MHC II molecules on antigen presenting cells.
<b>Source</b>	Monoclonal Rat IgG <sub>2B</sub> Clone # GK1.5
<b>Purification</b>	Protein A or G purified from hybridoma culture supernatant
<b>Immunogen</b>	Mouse CTL clone V4
<b>Conjugate</b>	Allophycocyanin Excitation Wavelength: 620-650 nm Emission Wavelength: 660-670 nm
<b>Formulation</b>	Supplied in a saline solution containing BSA and Sodium Azide. See Certificate of Analysis for details.  *Contains <0.1% Sodium Azide, which is not hazardous at this concentration according to GHS classifications. Refer to the Safety Data Sheet (SDS) for additional information and handling instructions.

## APPLICATIONS

**Please Note:** Optimal dilutions should be determined by each laboratory for each application. *General Protocols* are available in the *Technical Information* section on our website.

	<b>Recommended Concentration</b>	<b>Sample</b>
<b>Flow Cytometry</b>	10 µL/10 <sup>6</sup> cells	See Below

## DATA



## PREPARATION AND STORAGE

**Shipping** The product is shipped with polar packs. Upon receipt, store it immediately at the temperature recommended below.

**Stability & Storage** **Protect from light. Do not freeze.**

- 12 months from date of receipt, 2 to 8 °C as supplied.

## BACKGROUND

CD4 is a type I membrane glycoprotein belonging to the immunoglobulin superfamily. It is expressed predominantly on thymocytes and a subset of mature T lymphocytes. CD4 functions in collaboration with the T cell receptor in the recognition of peptide antigens that are presented by class II major histocompatibility complexes. CD4 also has been shown to be a coreceptor of HIV entry and specifically binds gp120, the external envelope glycoprotein of HIV.