

DESCRIPTION

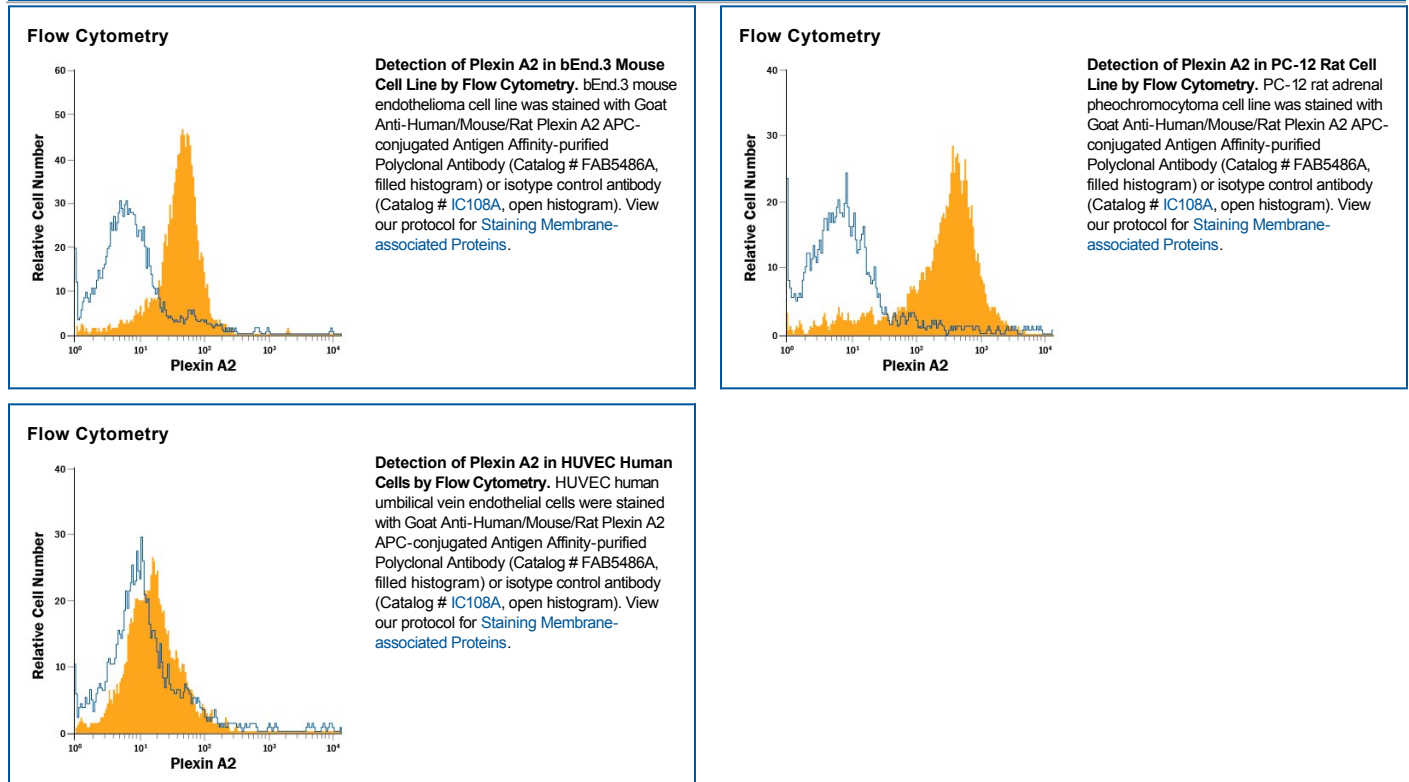
Species Reactivity	Human/Mouse/Rat
Specificity	Detects mouse and rat Plexin A2 in direct ELISAs and Western blots. In direct ELISAs, less than 1% cross-reactivity with recombinant mouse (rm) Plexin A1, rmPlexin A3, and recombinant human Plexin B1 is observed.
Source	Polyclonal Goat IgG
Purification	Antigen Affinity-purified
Immunogen	Chinese hamster ovary cell line CHO-derived recombinant mouse Plexin A2 Met35-Pro1237 Accession # P70207
Conjugate	Allophycocyanin Excitation Wavelength: 620-650 nm Emission Wavelength: 660-670 nm
Formulation	Supplied in a saline solution containing BSA and Sodium Azide. See Certificate of Analysis for details. *Contains <0.1% Sodium Azide, which is not hazardous at this concentration according to GHS classifications. Refer to the Safety Data Sheet (SDS) for additional information and handling instructions.

APPLICATIONS

Please Note: Optimal dilutions should be determined by each laboratory for each application. *General Protocols* are available in the *Technical Information* section on our website.

	Recommended Concentration	Sample
Flow Cytometry	10 μ L/10 ⁶ cells	See Below

DATA



PREPARATION AND STORAGE

Shipping	The product is shipped with polar packs. Upon receipt, store it immediately at the temperature recommended below.
Stability & Storage	Protect from light. Do not freeze. <ul style="list-style-type: none"> 12 months from date of receipt, 2 to 8 °C as supplied.

BACKGROUND

Plexin A2 (also OCT) is a 230-250 kDa member of the plexin-A subfamily, plexin family of proteins. It is found on cerebellar granule cells, sensory neurons, CD31⁺ LYVE⁺ lymphoid endothelial cells, osteoblasts, and cardiac neural crest cells. It blocks neurite outgrowth and lymphatic capillary formation, but promotes cell migration and osteogenesis, and does so by serving as a receptor for Sema6A and B, and as a coreceptor with neuropilins for Sema3A and C. Notably, it would appear to contribute to the receptor complex for BMPs by interacting with both BMPR1A/ALK3 and BMPR1B/ALK6 in conjunction with BMPR2. Mature mouse Plexin A2 is an 1860 amino acid (aa) type I transmembrane homodimeric glycoprotein. It contains a 1203 aa extracellular domain (ECD) and a 636 aa cytoplasmic region. The ECD contains one Sema domain (aa 35-508), three PSI domains (aa 510-855) and four IPT regions (aa 858-1228). Over aa 35-1237, mouse Plexin A2 shares 96% aa sequence identity with human Plexin A2.