

DESCRIPTION

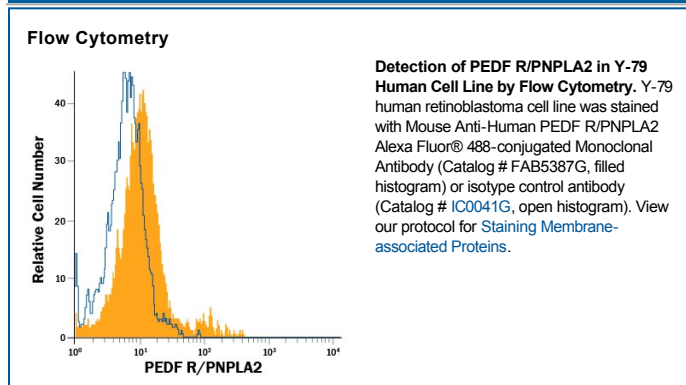
Species Reactivity	Human
Specificity	Detects human PEDF R/PNPLA2 in direct ELISAs and Western blots. In direct ELISAs and Western blots, no cross-reactivity with recombinant mouse PEDF R is observed.
Source	Monoclonal Mouse IgG _{2B} Clone # 494702
Purification	Protein A or G purified from hybridoma culture supernatant
Immunogen	<i>E. coli</i> -derived recombinant human PEDF R/PNPLA2 Val162-Thr332 Accession # Q96AD5
Conjugate	Alexa Fluor 488 Excitation Wavelength: 488 nm Emission Wavelength: 515-545 nm
Formulation	Supplied in a saline solution containing BSA and Sodium Azide. See Certificate of Analysis for details. *Contains <0.1% Sodium Azide, which is not hazardous at this concentration according to GHS classifications. Refer to the Safety Data Sheet (SDS) for additional information and handling instructions.

APPLICATIONS

Please Note: Optimal dilutions should be determined by each laboratory for each application. *General Protocols* are available in the *Technical Information* section on our website.

	Recommended Concentration	Sample
Flow Cytometry	5 µL/10 ⁶ cells	See Below

DATA



PREPARATION AND STORAGE

Shipping The product is shipped with polar packs. Upon receipt, store it immediately at the temperature recommended below.

Stability & Storage **Protect from light. Do not freeze.**

- 12 months from date of receipt, 2 to 8 °C as supplied.

BACKGROUND

PEDF R (Pigment Epithelium-derived Factor Receptor), also known as PNPLA2, ATGL, TTS2.2, iPLA2ζ (Calcium-independent Phospholipase A2 zeta) and Desnutrin, is a 82-86 kDa type II transmembrane protein that is a member of the patatin-like phospholipase domain-containing protein family (gene name PNPLA2). PEDF is highly expressed in adipose tissue (both white and brown fat cells), where it catalyzes formation of diacylglycerol from triglyceride, the transfer of an acyl (CoA-fatty acid) derivative to acyl-glycerol, and releases arachidonic acid from intracellular lipid deposits. It has also been found on retinal pigment epithelium, endothelial cells, hepatocytes, cerebellar granule cells, macrophages, mast cells, ovarian granulosa cells, retinal ganglia neurons and skeletal muscle cells. PEDF R is directly activated by PEDF, and indirectly by β3-AR which promotes CGI-58 association. Human PEDF R shares 85% amino acid (aa) sequence identity with mouse and rat PEDF R within aa 162-332, the region used as an immunogen.

PRODUCT SPECIFIC NOTICES

This product is provided under an agreement between Life Technologies Corporation and R&D Systems, Inc, and the manufacture, use, sale or import of this product is subject to one or more US patents and corresponding non-US equivalents, owned by Life Technologies Corporation and its affiliates. The purchase of this product conveys to the buyer the non-transferable right to use the purchased amount of the product and components of the product only in research conducted by the buyer (whether the buyer is an academic or for-profit entity). The sale of this product is expressly conditioned on the buyer not using the product or its components (1) in manufacturing; (2) to provide a service, information, or data to an unaffiliated third party for payment; (3) for therapeutic, diagnostic or prophylactic purposes; (4) to resell, sell, or otherwise transfer this product or its components to any third party, or for any other commercial purpose. Life Technologies Corporation will not assert a claim against the buyer of the infringement of the above patents based on the manufacture, use or sale of a commercial product developed in research by the buyer in which this product or its components was employed, provided that neither this product nor any of its components was used in the manufacture of such product. For information on purchasing a license to this product for purposes other than research, contact Life Technologies Corporation, Cell Analysis Business Unit, Business Development, 29851 Willow Creek Road, Eugene, OR 97402, Tel: (541) 465-8300. Fax: (541) 335-0354.