

DESCRIPTION

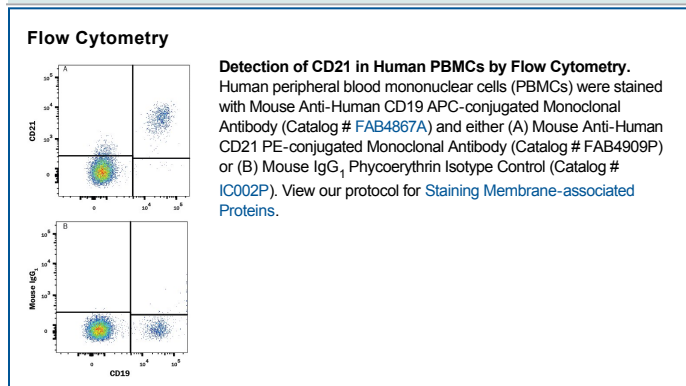
Species Reactivity	Human
Specificity	Detects human CD21 in direct ELISAs and Western blots.
Source	Monoclonal Mouse IgG ₁ Clone # 544408
Purification	Protein A or G purified from hybridoma culture supernatant
Immunogen	Chinese hamster ovary cell line CHO-derived recombinant human CD21 Ile21-Arg971 Accession # P20023
Conjugate	Allophycocyanin Excitation Wavelength: 620-650 nm Emission Wavelength: 660-670 nm
Formulation	Supplied in a saline solution containing BSA and Sodium Azide. See Certificate of Analysis for details. *Contains <0.1% Sodium Azide, which is not hazardous at this concentration according to GHS classifications. Refer to the Safety Data Sheet (SDS) for additional information and handling instructions.

APPLICATIONS

Please Note: Optimal dilutions should be determined by each laboratory for each application. *General Protocols* are available in the *Technical Information* section on our website.

	Recommended Concentration	Sample
Flow Cytometry	10 μ L/10 ⁶ cells	See Below

DATA



PREPARATION AND STORAGE

Shipping	The product is shipped with polar packs. Upon receipt, store it immediately at the temperature recommended below.
Stability & Storage	Protect from light. Do not freeze. <ul style="list-style-type: none"> 12 months from date of receipt, 2 to 8 °C as supplied.

BACKGROUND

CD21, also known as EBV Receptor or CR2 is a 145 kDa member of the RCA (Receptors of Complement Activation) family of proteins. It is expressed on T cells, B cells, and follicular dendritic cells. On the B cell surface, it combines with the BCR and CD19 to form a B cell activating complex. Mature human CD21 is 1013 amino acids (aa) in length. It is a type I Transmembrane (TM) protein that contains a 951 aa Extracellular Domain (ECD) (aa 21-971) and a short 34 aa cytoplasmic tail. The ECD exhibits fifteen 60 aa SUSHI repeats. Soluble CD21 can be generated by cleavage near the TM domain. One potential splice variant shows a deletion of aa 847-908, while another shows an insertion of 59 aa after Lys659. The ECD of human CD21 shares 71% aa identity with mouse CD21 ECD.