

## DESCRIPTION

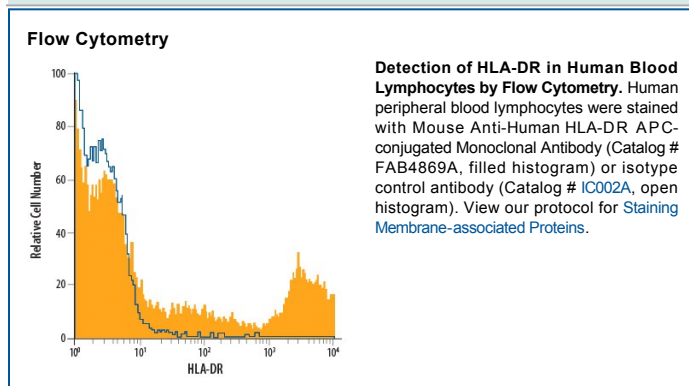
<b>Species Reactivity</b>	Human
<b>Specificity</b>	Detects human HLA-DR.
<b>Source</b>	Monoclonal Mouse IgG <sub>1</sub> Clone # L203
<b>Purification</b>	Protein A or G purified from hybridoma culture supernatant
<b>Immunogen</b>	RPMI 8866 human lymphoblastoid cells Accession # P01903
<b>Conjugate</b>	Allophycocyanin Excitation Wavelength: 620-650 nm Emission Wavelength: 660-670 nm
<b>Formulation</b>	Supplied in a saline solution containing BSA and Sodium Azide. See Certificate of Analysis for details.  *Contains <0.1% Sodium Azide, which is not hazardous at this concentration according to GHS classifications. Refer to the Safety Data Sheet (SDS) for additional information and handling instructions.

## APPLICATIONS

**Please Note:** Optimal dilutions should be determined by each laboratory for each application. *General Protocols* are available in the *Technical Information* section on our website.

	<b>Recommended Concentration</b>	<b>Sample</b>
<b>Flow Cytometry</b>	10 µL/10 <sup>6</sup> cells	See Below

## DATA



## PREPARATION AND STORAGE

<b>Shipping</b>	The product is shipped with polar packs. Upon receipt, store it immediately at the temperature recommended below.
<b>Stability &amp; Storage</b>	<b>Protect from light. Do not freeze.</b> <ul style="list-style-type: none"> <li>● 12 months from date of receipt, 2 to 8 °C as supplied.</li> </ul>

## BACKGROUND

HLA-DR is a transmembrane human major histocompatibility complex 2 (MHC II) family member and consists of a 34 kDa (alpha) subunit and one of several 28 kDa (beta) subunits. HLA-DR is expressed primarily by B cells and dendritic cells (DC), in which it binds peptides derived from internalized and processed antigenic proteins. It presents these peptides on the cell surface for recognition by the T cell receptor on CD4<sup>+</sup> T cells. This interaction is central to antigen specificity in the adaptive immune response. HLA-DR alleles, polymorphisms, and aberrant expression are linked to a variety of diseases including autoimmunity and cancer.