

DESCRIPTION

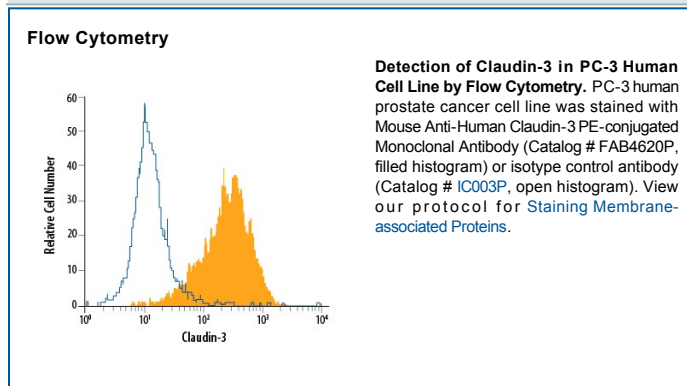
| | |
|---------------------------|--|
| Species Reactivity | Human |
| Specificity | Stains human Claudin-3 transfectants but not irrelevant transfectants. |
| Source | Monoclonal Mouse IgG _{2A} Clone # 385021 |
| Purification | Protein A or G purified from hybridoma culture supernatant |
| Immunogen | HEK293 human embryonic kidney cell line transfected with human Claudin-3 Met1-Val220 Accession # O15551 |
| Conjugate | Phycoerythrin Excitation Wavelength: 488 nm Emission Wavelength: 565-605 nm |
| Formulation | Supplied in a saline solution containing BSA and Sodium Azide. See Certificate of Analysis for details. *Contains <0.1% Sodium Azide, which is not hazardous at this concentration according to GHS classifications. Refer to the Safety Data Sheet (SDS) for additional information and handling instructions. |

APPLICATIONS

Please Note: Optimal dilutions should be determined by each laboratory for each application. *General Protocols* are available in the *Technical Information* section on our website.

| | Recommended Concentration | Sample |
|-----------------------|----------------------------------|-----------|
| Flow Cytometry | 10 μ L/10 ⁶ cells | See Below |

DATA



PREPARATION AND STORAGE

| | |
|--------------------------------|--|
| Shipping | The product is shipped with polar packs. Upon receipt, store it immediately at the temperature recommended below. |
| Stability & Storage | Protect from light. Do not freeze. <ul style="list-style-type: none"> 12 months from date of receipt, 2 to 8 °C as supplied. |

BACKGROUND

Claudin-3 is a 23 kDa multipass membrane protein in the claudin family of epithelial tight junction proteins. Claudin-3 is upregulated by EGF and in inflammation and a variety of epithelial cancers. Its expression is lost in the blood brain barrier during pathological disruptions of that structure. Claudin-3 binding to the *Clostridium perfringens* exotoxin induces epithelial cell lysis. Human Claudin-3 shares 91% amino acid sequence identity with mouse and rat Claudin-3.