

## DESCRIPTION

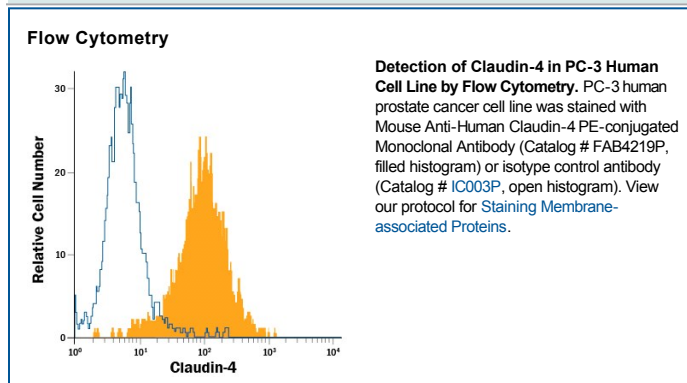
<b>Species Reactivity</b>	Human
<b>Specificity</b>	Detects human Claudin-4. Stains human Claudin-4 transfectants but not irrelevant transfectants. Recognizes an epitope in the first extracellular loop (aa Met29-Arg81).
<b>Source</b>	Monoclonal Mouse IgG <sub>2A</sub> Clone # 382321
<b>Purification</b>	Protein A or G purified from hybridoma culture supernatant
<b>Immunogen</b>	NS0 mouse myeloma cell line transfected with human Claudin-4 Met1-Val209 Accession # NP_001296
<b>Conjugate</b>	Phycoerythrin Excitation Wavelength: 488 nm Emission Wavelength: 565-605 nm
<b>Formulation</b>	Supplied in a saline solution containing BSA and Sodium Azide. See Certificate of Analysis for details.  *Contains <0.1% Sodium Azide, which is not hazardous at this concentration according to GHS classifications. Refer to the Safety Data Sheet (SDS) for additional information and handling instructions.

## APPLICATIONS

**Please Note:** Optimal dilutions should be determined by each laboratory for each application. *General Protocols* are available in the *Technical Information* section on our website.

	<b>Recommended Concentration</b>	<b>Sample</b>
<b>Flow Cytometry</b>	10 $\mu$ L/10 <sup>6</sup> cells	See Below

## DATA



## PREPARATION AND STORAGE

<b>Shipping</b>	The product is shipped with polar packs. Upon receipt, store it immediately at the temperature recommended below.
<b>Stability &amp; Storage</b>	<b>Protect from light. Do not freeze.</b> <ul style="list-style-type: none"> <li>● 12 months from date of receipt, 2 to 8 °C as supplied.</li> </ul>

## BACKGROUND

Claudin-4 is a multipass membrane protein in the claudin family of tight junction proteins. Claudin-4 is a 209 amino acid molecule with four transmembrane segments. It is preferentially expressed in intestinal mucosa epithelium and is involved in epithelial tissue development. It is also up-regulated in several carcinomas. Phosphorylation of Claudin-4 regulates paracellular epithelial permeability. Human Claudin-4 shares 83% aa sequence identity with mouse and rat Claudin-4.