

DESCRIPTION

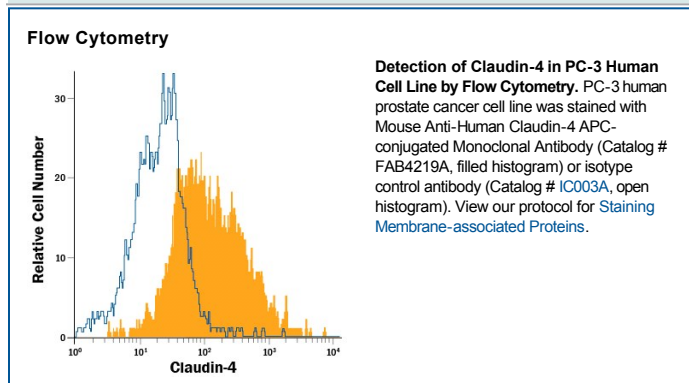
Species Reactivity	Human
Specificity	Detects human Claudin-4. Stains human Claudin-4 transfectants but not irrelevant transfectants. Recognizes an epitope in the first extracellular loop (aa Met29-Arg81).
Source	Monoclonal Mouse IgG _{2A} Clone # 382321
Purification	Protein A or G purified from hybridoma culture supernatant
Immunogen	NS0 mouse myeloma cell line transfected with human Claudin-4 Met1-Val209 Accession # NP_001296
Conjugate	Allophycocyanin Excitation Wavelength: 620-650 nm Emission Wavelength: 660-670 nm
Formulation	Supplied in a saline solution containing BSA and Sodium Azide. See Certificate of Analysis for details. *Contains <0.1% Sodium Azide, which is not hazardous at this concentration according to GHS classifications. Refer to the Safety Data Sheet (SDS) for additional information and handling instructions.

APPLICATIONS

Please Note: Optimal dilutions should be determined by each laboratory for each application. *General Protocols* are available in the *Technical Information* section on our website.

	Recommended Concentration	Sample
Flow Cytometry	10 µL/10 ⁶ cells	See Below

DATA



PREPARATION AND STORAGE

Shipping	The product is shipped with polar packs. Upon receipt, store it immediately at the temperature recommended below.
Stability & Storage	Protect from light. Do not freeze. <ul style="list-style-type: none"> ● 12 months from date of receipt, 2 to 8 °C as supplied.

BACKGROUND

Claudin-4 is a multipass membrane protein in the claudin family of tight junction proteins. Claudin-4 is a 209 amino acid molecule with four transmembrane segments. It is preferentially expressed in intestinal mucosa epithelium and is involved in epithelial tissue development. It is also up-regulated in several carcinomas. Phosphorylation of Claudin-4 regulates paracellular epithelial permeability. Human Claudin-4 shares 83% aa sequence identity with mouse and rat Claudin-4.