

DESCRIPTION

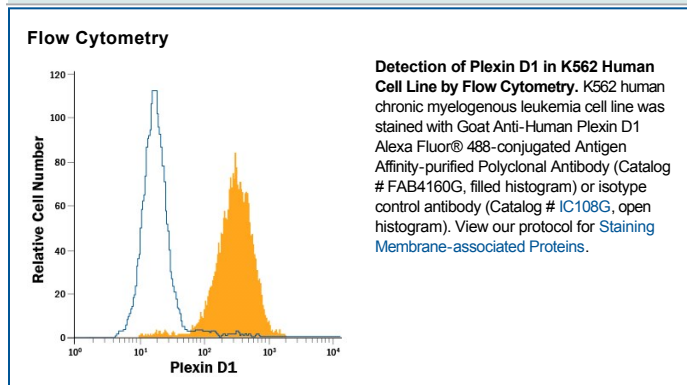
Species Reactivity	Human
Specificity	Detects human Plexin D1 in direct ELISAs and Western blots. In direct ELISAs and Western blots, less than 1% cross-reactivity with recombinant mouse (rm) Plexin A1, rmPlexin A3, and recombinant human Plexin B1 is observed.
Source	Polyclonal Goat IgG
Purification	Antigen Affinity-purified
Immunogen	Mouse myeloma cell line NS0-derived recombinant human Plexin D1 Leu47-Ala1271 Accession # Q9Y4D7
Conjugate	Alexa Fluor 488 Excitation Wavelength: 488 nm Emission Wavelength: 515-545 nm
Formulation	Supplied in a saline solution containing BSA and Sodium Azide. See Certificate of Analysis for details. *Contains <0.1% Sodium Azide, which is not hazardous at this concentration according to GHS classifications. Refer to the Safety Data Sheet (SDS) for additional information and handling instructions.

APPLICATIONS

Please Note: Optimal dilutions should be determined by each laboratory for each application. *General Protocols* are available in the *Technical Information* section on our website.

	Recommended Concentration	Sample
Flow Cytometry	5 μ L/ 10^6 cells	See Below

DATA



PREPARATION AND STORAGE

Shipping	The product is shipped with polar packs. Upon receipt, store it immediately at the temperature recommended below.
Stability & Storage	Protect from light. Do not freeze. <ul style="list-style-type: none"> ● 12 months from date of receipt, 2 to 8 °C as supplied.

BACKGROUND

Plexin D1 is a type I transmembrane glycoprotein that is the prototype of the plexin D subfamily of semaphorin receptors (1, 2). Human Plexin D1 contains a 46 amino acid (aa) signal sequence, a 1225 aa extracellular domain (ECD), a 21 aa transmembrane domain, and a 633 aa cytoplasmic domain that includes features common to other plexins (1). The human Plexin D1 ECD shares 89% identity with mouse Plexin D1, and ~84-92% aa identity based on incomplete sequences of rat, bovine, porcine and canine Plexin D1. It contains a sema domain, two plexin-semaphorin-integrin (PSI) or Met-related sequence (MRS) cysteine-rich motifs, and three glycine/proline-rich IPT/TIG domains which are immunoglobulin-like domains found in plexins, transcription factors, and the scatter factor receptors Met and Ron (1, 2). Isoforms of 1787 and 1747 aa have been sequenced; these contain a 178 aa N-terminal deletion with or without a longer alternate C-terminus (3). Like other Sema/plexin interactions, Plexin D1 interacts with Sema3C or Sema4A via neuropilins. Interaction with Sema3E, however, is direct (4). Plexin D1/Sema3E interaction mediates vascular guidance during development or angiogenesis; deletion of either molecule results in similar, profound cardiac abnormalities (4, 5). Plexin D1 is also expressed in lymphocytes, osteoblasts, the neural crest and the central nervous system during development (2, 6). In the brain, the presence of neuropilin can change Plexin D1/Sema3E interaction from an attractive to a repulsive signal (7, 8). Plexin D1 directs migration of thymocytes to the thymic medulla, probably through repulsion of Sema3E (9). Endothelial cell Plexin D1 binding to Sema4A can oppose VEGF and suppresses tumor angiogenesis, and expression of Sema3E correlates inversely with tumor metastasis, indicating that Plexin D1 is anti-metastatic in the presence of its ligands (10, 11).

References:

1. Negishi, M. *et al.* (2005) *Cell. Mol. Life Sci.* **62**:1363.
2. Van Der Zwaag, B. *et al.* (2002) *Dev. Dyn.* **225**:336.
3. Entrez protein Accession # Q9Y4D7, EAW79239, EAW79240.
4. Gu, C. *et al.* (2005) *Science* **307**:265.
5. Gitler, A.D. *et al.* (2004) *Developmental Cell* **7**:107.
6. Zhang, Y. *et al.* (2009) *Dev. Biol.* **325**:82.
7. Chauvet, S. *et al.* (2007) *Neuron* **56**:807.
8. Pecho-Vrieseling, E. *et al.* (2009) *Nature* **459**:842.
9. Choi, Y.I. *et al.* (2008) *Immunity* **29**:888.
10. Toyofuku, T. *et al.* (2007) *EMBO J.* **26**:1373.
11. Roodink, I. *et al.* (2008) *Am. J. Pathol.* **173**:1873.

PRODUCT SPECIFIC NOTICES

This product is provided under an agreement between Life Technologies Corporation and R&D Systems, Inc, and the manufacture, use, sale or import of this product is subject to one or more US patents and corresponding non-US equivalents, owned by Life Technologies Corporation and its affiliates. The purchase of this product conveys to the buyer the non-transferable right to use the purchased amount of the product and components of the product only in research conducted by the buyer (whether the buyer is an academic or for-profit entity). The sale of this product is expressly conditioned on the buyer not using the product or its components (1) in manufacturing; (2) to provide a service, information, or data to an unaffiliated third party for payment; (3) for therapeutic, diagnostic or prophylactic purposes; (4) to resell, sell, or otherwise transfer this product or its components to any third party, or for any other commercial purpose. Life Technologies Corporation will not assert a claim against the buyer of the infringement of the above patents based on the manufacture, use or sale of a commercial product developed in research by the buyer in which this product or its components was employed, provided that neither this product nor any of its components was used in the manufacture of such product. For information on purchasing a license to this product for purposes other than research, contact Life Technologies Corporation, Cell Analysis Business Unit, Business Development, 29851 Willow Creek Road, Eugene, OR 97402, Tel: (541) 465-8300. Fax: (541) 335-0354.