

DESCRIPTION

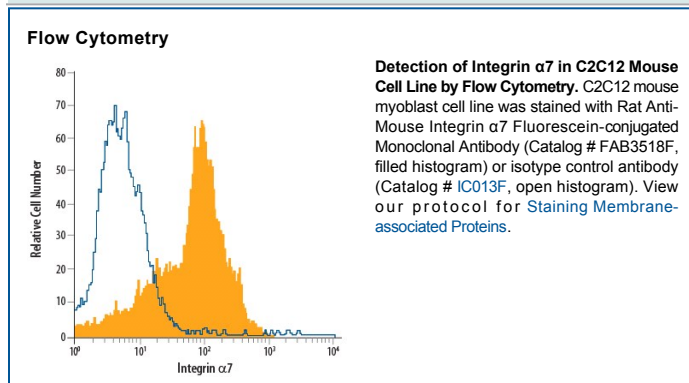
Species Reactivity	Mouse
Specificity	Detects mouse Integrin α 7 in direct ELISAs. Reactivity with other Integrin α 7 isoforms was not tested. In direct ELISAs, no cross-reactivity with recombinant mouse Integrin α 2, α 3, α 4, α 5, α 9, α E, α X, recombinant human Integrin α L, or α 11 is observed.
Source	Monoclonal Rat IgG _{2B} Clone # 334908
Purification	Protein A or G purified from hybridoma culture supernatant
Immunogen	Chinese hamster ovary cell line CHO-derived recombinant mouse Integrin α 7 Phe34-Pro1036 Accession # NP_032424
Conjugate	Fluorescein Excitation Wavelength: 488 nm Emission Wavelength: 515-545 nm
Formulation	Supplied in a saline solution containing BSA and Sodium Azide. See Certificate of Analysis for details. *Contains <0.1% Sodium Azide, which is not hazardous at this concentration according to GHS classifications. Refer to the Safety Data Sheet (SDS) for additional information and handling instructions.

APPLICATIONS

Please Note: Optimal dilutions should be determined by each laboratory for each application. *General Protocols* are available in the *Technical Information* section on our website.

	Recommended Concentration	Sample
Flow Cytometry	10 μ L/10 ⁶ cells	See Below

DATA



PREPARATION AND STORAGE

Shipping	The product is shipped with polar packs. Upon receipt, store it immediately at the temperature recommended below.
Stability & Storage	Protect from light. Do not freeze. <ul style="list-style-type: none"> ● 12 months from date of receipt, 2 to 8 °C as supplied.

BACKGROUND

Integrin α 7 is a transmembrane glycoprotein that forms heterodimers with Integrin β 1 to bind Laminin 1.