

DESCRIPTION

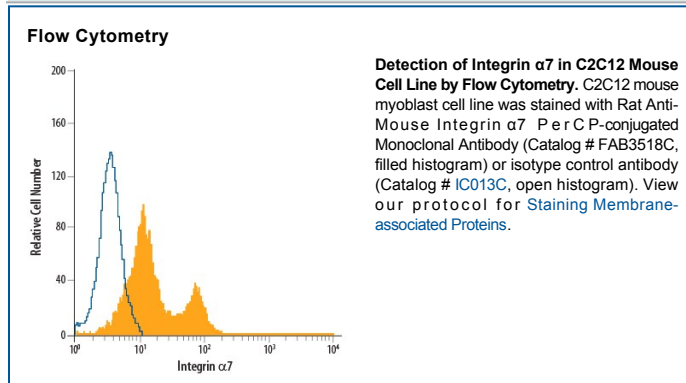
Species Reactivity	Mouse
Specificity	Detects mouse Integrin $\alpha 7$ in direct ELISAs. Reactivity with other Integrin $\alpha 7$ isoforms was not tested. In direct ELISAs, no cross-reactivity with recombinant mouse Integrin $\alpha 2$, $\alpha 3$, $\alpha 4$, $\alpha 5$, $\alpha 9$, αE , αX , recombinant human Integrin αL , or $\alpha 11$ is observed.
Source	Monoclonal Rat IgG _{2B} Clone # 334908
Purification	Protein A or G purified from hybridoma culture supernatant
Immunogen	Chinese hamster ovary cell line CHO-derived recombinant mouse Integrin $\alpha 7$ Phe34-Pro1036 Accession # NP_032424
Conjugate	PerCP (Peridinin-chlorophyll Protein Complex) Excitation Wavelength: 482 and 564 nm Emission Wavelength: 675 nm
Formulation	Supplied in a saline solution containing BSA and Sodium Azide. See Certificate of Analysis for details. *Contains <0.1% Sodium Azide, which is not hazardous at this concentration according to GHS classifications. Refer to the Safety Data Sheet (SDS) for additional information and handling instructions.

APPLICATIONS

Please Note: Optimal dilutions should be determined by each laboratory for each application. *General Protocols* are available in the *Technical Information* section on our website.

	Recommended Concentration	Sample
Flow Cytometry	10 μ L/10 ⁶ cells	See Below

DATA



PREPARATION AND STORAGE

Shipping	The product is shipped with polar packs. Upon receipt, store it immediately at the temperature recommended below.
Stability & Storage	Protect from light. Do not freeze. <ul style="list-style-type: none"> 12 months from date of receipt, 2 to 8 °C as supplied.

BACKGROUND

Integrin $\alpha 7$ is a transmembrane glycoprotein that forms heterodimers with Integrin $\beta 1$ to bind Laminin 1.