

## DESCRIPTION

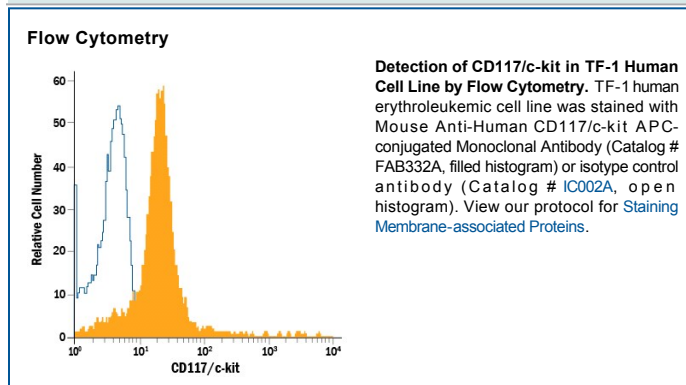
<b>Species Reactivity</b>	Human
<b>Specificity</b>	Detects human CD117/c-kit in ELISAs and Western blots. In sandwich immunoassays and Western blots, no cross-reactivity with recombinant mouse CD117 is observed.
<b>Source</b>	Monoclonal Mouse IgG <sub>1</sub> Clone # 47233
<b>Purification</b>	Protein A or G purified from ascites
<b>Immunogen</b>	<i>S. frugiperda</i> insect ovarian cell line Sf 21-derived recombinant human CD117/c-kit Gln26-Thr520 Accession # P10721
<b>Conjugate</b>	Allophycocyanin Excitation Wavelength: 620-650 nm Emission Wavelength: 660-670 nm
<b>Formulation</b>	Supplied in a saline solution containing BSA and Sodium Azide. See Certificate of Analysis for details.  *Contains <0.1% Sodium Azide, which is not hazardous at this concentration according to GHS classifications. Refer to the Safety Data Sheet (SDS) for additional information and handling instructions.

## APPLICATIONS

**Please Note:** Optimal dilutions should be determined by each laboratory for each application. *General Protocols* are available in the *Technical Information* section on our website.

	<b>Recommended Concentration</b>	<b>Sample</b>
<b>Flow Cytometry</b>	10 $\mu$ L/10 <sup>6</sup> cells	See Below

## DATA



## PREPARATION AND STORAGE

<b>Shipping</b>	The product is shipped with polar packs. Upon receipt, store it immediately at the temperature recommended below.
<b>Stability &amp; Storage</b>	<b>Protect from light. Do not freeze.</b> <ul style="list-style-type: none"> <li>● 12 months from date of receipt, 2 to 8 °C as supplied.</li> </ul>

## BACKGROUND

Stem Cell Factor Receptor (CD117, the gene product of the *c-kit* proto-oncogene) and its ligand, Stem Cell Factor (SCF), also known as c-kit Ligand, Mast Cell Growth Factor, play essential roles in gametogenesis, melanogenesis, and hematopoiesis. The human SCF Receptor cDNA encodes a 972 amino acid (aa) residue precursor membrane protein with a 25 aa residue signal peptide (experimentally determined), a 495 aa residue extracellular domain, a 23 aa residue transmembrane segment, and a 429 aa residue cytoplasmic domain. SCF Receptor is a member of the type III subfamily of Receptor Tyrosine Kinases (RTK) that also includes the receptors for M-CSF, Flt-3, PDGF, and VEGF. All class III RTKs are characterized by the presence of five immunoglobulin-like domains in their extracellular region and a split kinase domain in their intracellular region. SCF binding induces receptor homodimerization and signal transduction. SCF Receptor is expressed in hematopoietic progenitor cells, normal B and T lymphocyte progenitor cells, mast cells, germ cells, melanocytes, neurons, glial cells, placenta, kidney, lung, and gut. In addition, SCF Receptor expression has also been reported in a number of human tumor cell lines. SCF Receptor can be proteolytically cleaved from the cell surface and high levels of soluble SCF Receptor has been detected in cell conditioned medium and human plasma. Recombinant soluble SCF Receptor binds SCF with high affinity and is a potent SCF antagonist.